



Machine

Inventory N°	6949
Description	Turning lathe
Brand	SCHAUBLIN
Model	70 CF
Serial No	350 105
Year	2001



Heading

Working range

Centre height	70 mm
Distance between centres	235 mm

Headstock

Spindle speed	100-4000 t/min
Collets type	W 12
Maximum bore through chuck	8.2 mm
Motor	380 V 0.75 - 2000 kW

Over-all dimensions	mm
Depth	600 mm
Height	1500 mm
Machine's weight	220 Kg

Accessories

Drill chuck	1
Lever operated cross slide	1
Rotary centre	1
Set collet chucks	1
Work bench	1

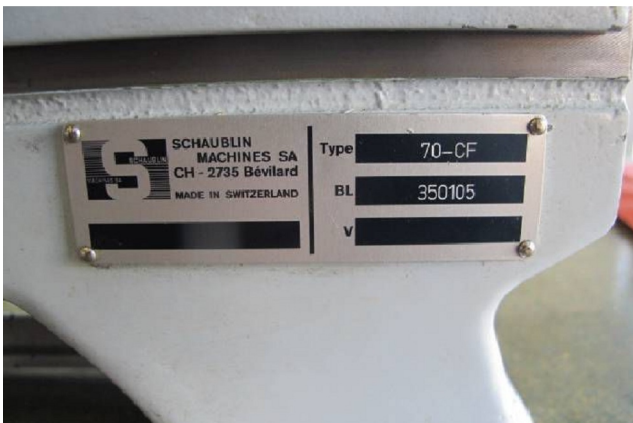
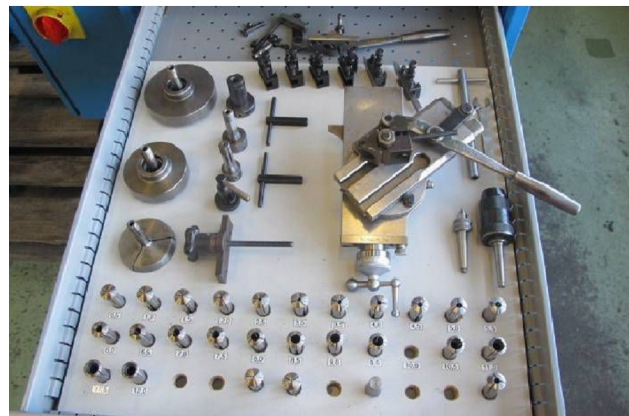
HD pictures and videos on request.

All data such as technical specifications, weight, dimensions, illustrations are indicative and subject to change without notice.



Inventory N° **6949**

Pictures



HD pictures and videos on request.

All data such as technical specifications, weight, dimensions, illustrations are indicative and subject to change without notice.