



Machine

Inventory N°	6661
Description	Milling machine
Brand	KERN
Model	10/10
Serial No	241
Year	1992



Heading

Control	heidenhain TNC
Number of axis total	3
Spindle speed	1'500-20'000 t/min
Longitudinal traverse (x-axis)	160 mm
Cross traverse (y-axis)	100 mm
Vertical travel (z axis)	175 mm
Spindle	fischer FEZS
Number of tools	12

Accessories

None

Pictures

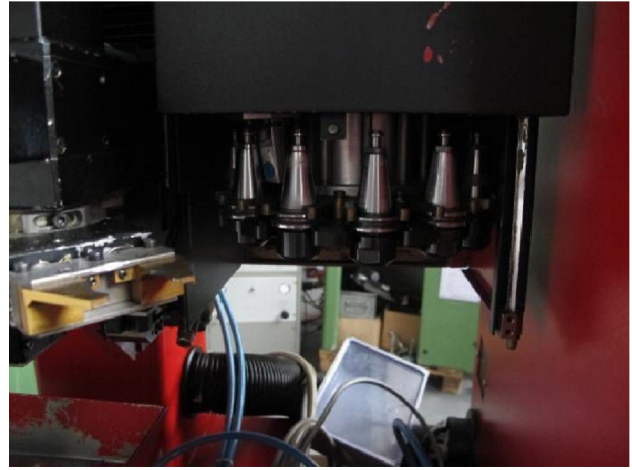


HD pictures and videos on request.

All data such as technical specifications, weight, dimensions, illustrations are indicative and subject to change without notice.



Inventory N° 6661



HD pictures and videos on request.
All data such as technical specifications, weight, dimensions, illustrations are indicative and subject to change without notice.



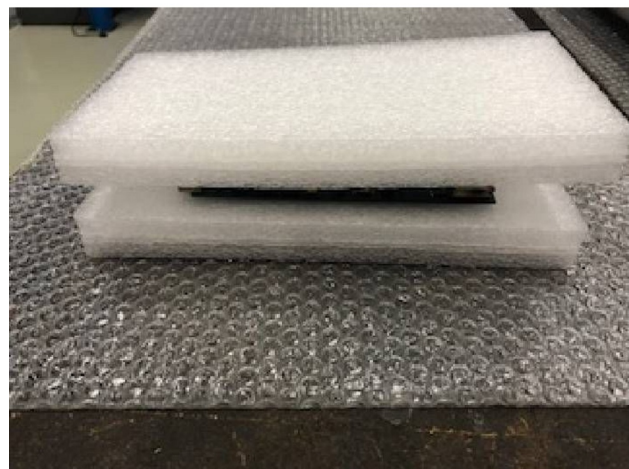
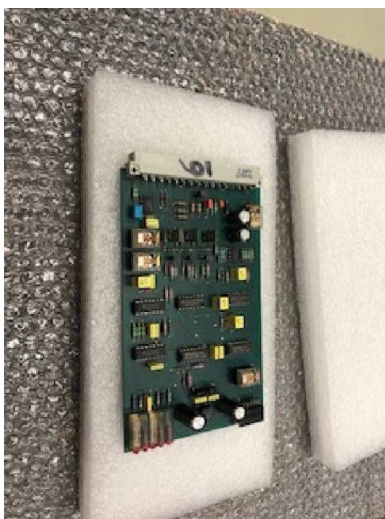
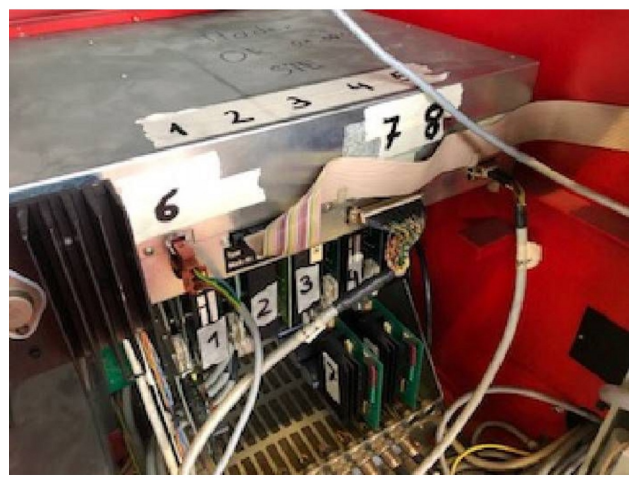
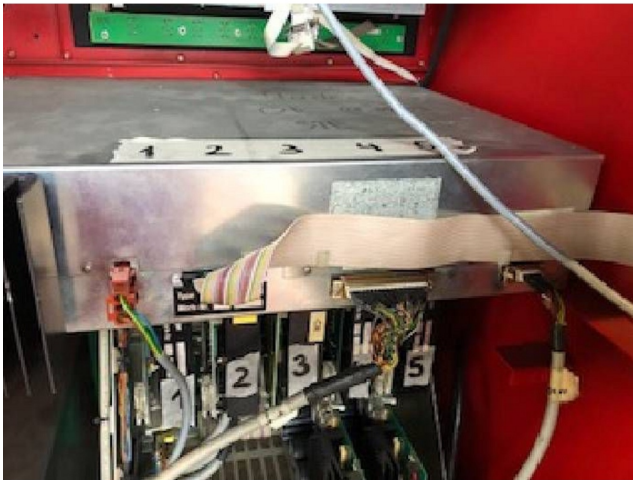
Inventory N° **6661**



HD pictures and videos on request.
All data such as technical specifications, weight, dimensions, illustrations are indicative and subject to change without notice.



Inventory N° 6661

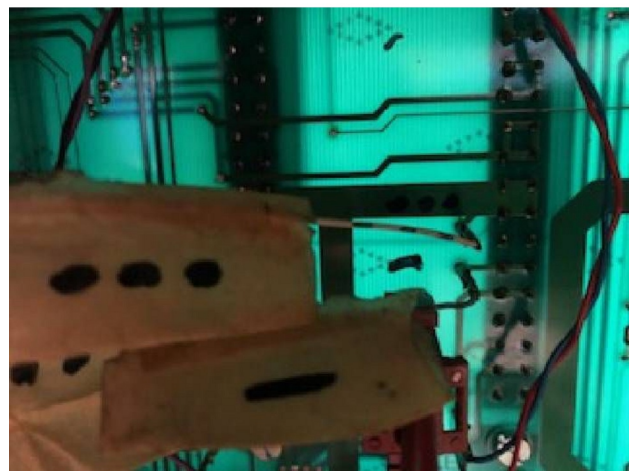
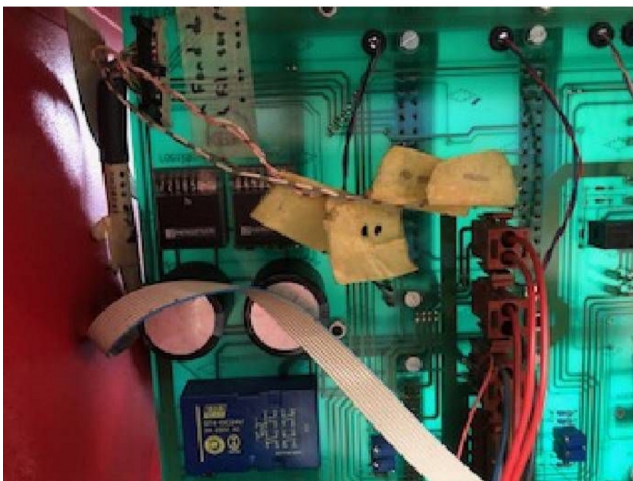
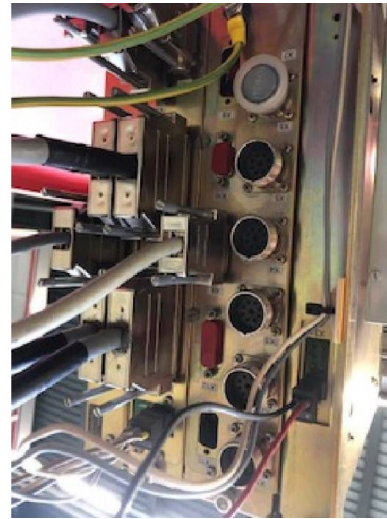
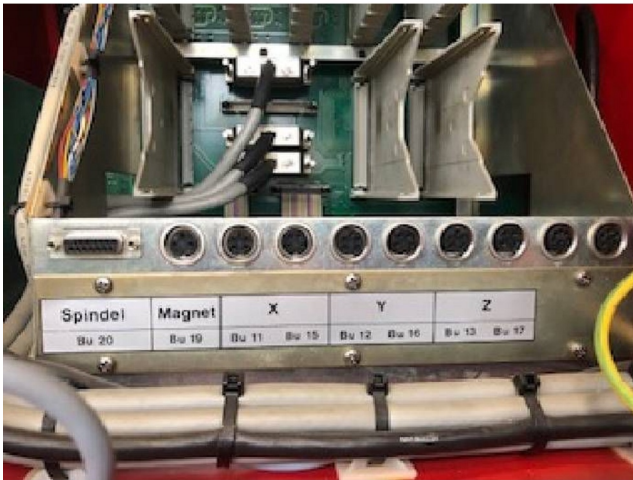


HD pictures and videos on request.

All data such as technical specifications, weight, dimensions, illustrations are indicative and subject to change without notice.



Inventory N° 6661

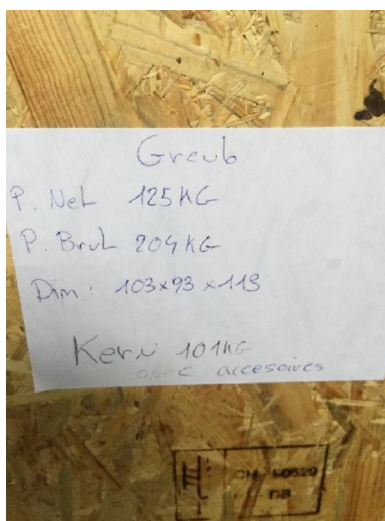
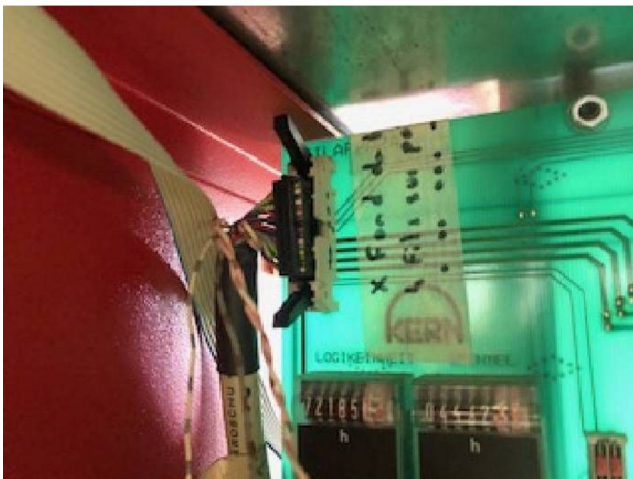
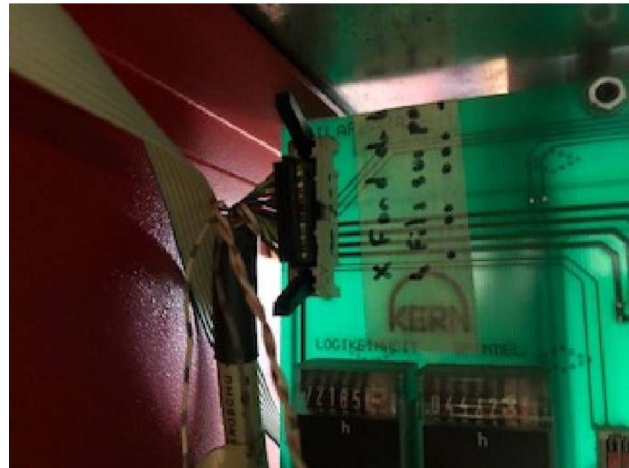


HD pictures and videos on request.

All data such as technical specifications, weight, dimensions, illustrations are indicative and subject to change without notice.

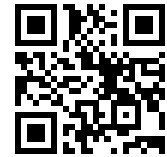


Inventory N° **6661**

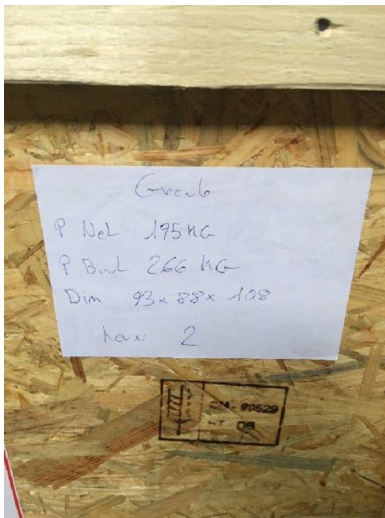


HD pictures and videos on request.

All data such as technical specifications, weight, dimensions, illustrations are indicative and subject to change without notice.



Inventory N° **6661**



HD pictures and videos on request.

All data such as technical specifications, weight, dimensions, illustrations are indicative and subject to change without notice.