

Machine

Inventory N°	5937
Description	Eccentric press
Brand	ESSA
Model	RE 8
Serial No	09-010
Year	R2009



Heading

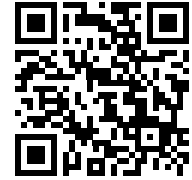
Pressure	4 to
Execution: number of columns	2
Fixed table: length	210 mm
Width	210 mm
Machine frame: fixed	
Diameter	80 mm
Number of strokes	
From	50 c/min
Up to	150 c/min
Adjustment of the slide	40 mm
Fixed stroke	27 mm
Tool height	148 mm
Passage between columns	
Longitudinal	230 mm
Voltage	380 Volt
Total power required	0.75 CV
Weight	500 Kg
Overall dimensions: l x w x h	700x600x1400 mm

Accessories

None

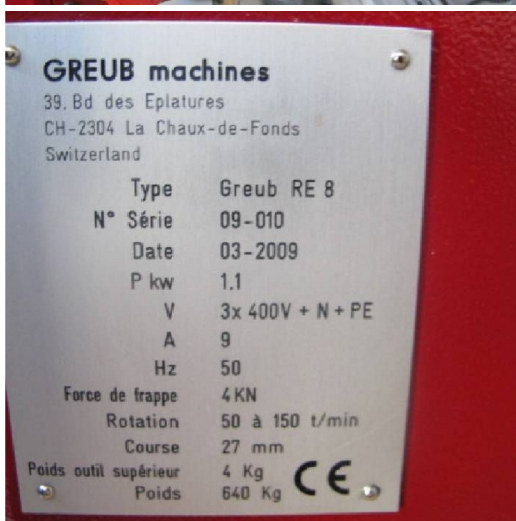
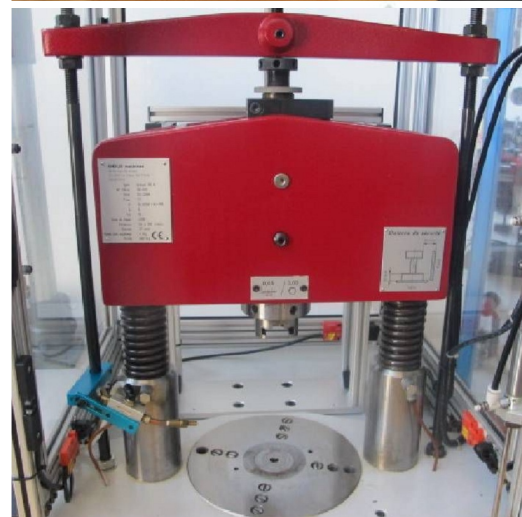
HD pictures and videos on request.

All data such as technical specifications, weight, dimensions, illustrations are indicative and subject to change without notice.



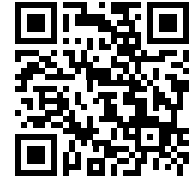
Inventory N° 5937

Pictures

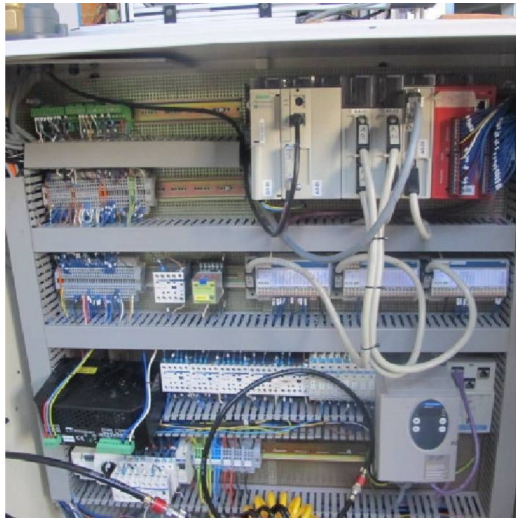


HD pictures and videos on request.

All data such as technical specifications, weight, dimensions, illustrations are indicative and subject to change without notice.



Inventory N° **5937**



HD pictures and videos on request.
All data such as technical specifications, weight, dimensions, illustrations are indicative and subject to change without notice.