

Machine

Inventory N°	5927
Description	Press
State	Neuve
Brand	GREUB
Model	G3
Serial No	0006
Year	2015



Heading

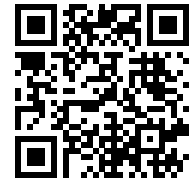
Control	Fanuc PMI-A
Pressure	3 to
Up to	x
Adjustment of the slide	25
Cycle	100 c/min
Adjustment of the slide	15
Cycle	150 c/min
Adjustment of the slide	6
Cycle	300 c/min
	83-167 mm
Axe z	
Motor power	1,5/4 kW
Spindle lead	10 mm
Total stroke	84 mm
Over-all dimensions	2350x980x1735 mm
Weight	760 Kg
Voltage	400 Volts
Gripper feed	
Coil Ø	550 mm
Power drawn by the machine	7,5 kVA

Accessories

None

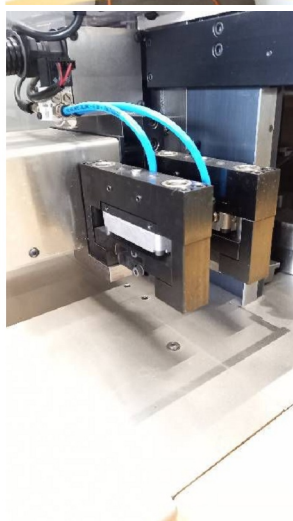
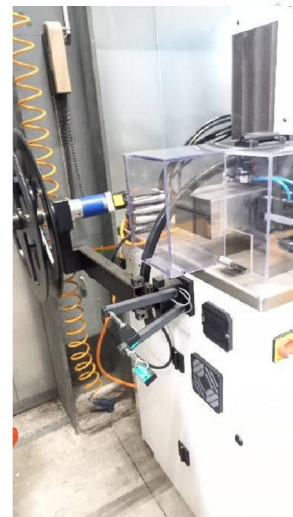
HD pictures and videos on request.

All data such as technical specifications, weight, dimensions, illustrations are indicative and subject to change without notice.



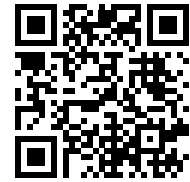
Inventory N° 5927

Pictures

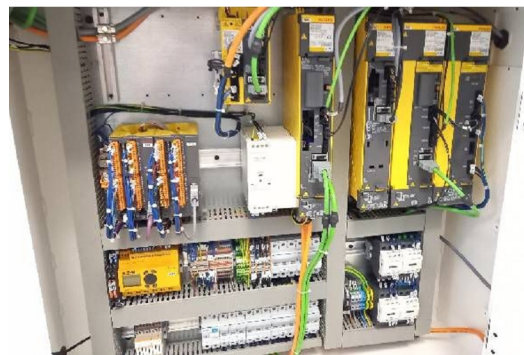
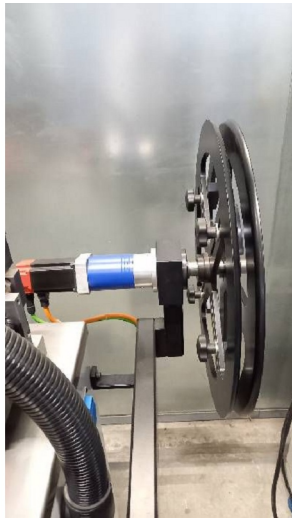


HD pictures and videos on request.

All data such as technical specifications, weight, dimensions, illustrations are indicative and subject to change without notice.



Inventory N° 5927



HD pictures and videos on request.

All data such as technical specifications, weight, dimensions, illustrations are indicative and subject to change without notice.