



## Machine

Inventory N°	<b>5620</b>
Description	Milling machine
Brand	<b>SCHAUBLIN</b>
Model	<b>53</b>
Serial No	<b>217634</b>
Year	<b>1970</b>



## Heading

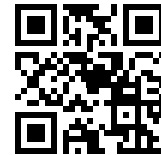
Longitudinal traverse (x-axis)	700 mm
Vertical travel (z axis)	430 mm
Spindle speeds	
Number (steps)	18
From	38 t/min
Up to	1510 t/min
Taper size	40 ISO
Feeds steps:	18
Longitudinal from	12 mm/min
Up to	1050 mm/min
Vertical from	6 mm/min
Up to	525 mm/min
Avances rapide	
Longitudinal	3.5 m/min
Transversal	3.5 m/min
Vertical	1.8 m/min
Total power required	5.0 kW

## Accessories

<b>Etai</b>	1
<b>Tool holder</b>	26

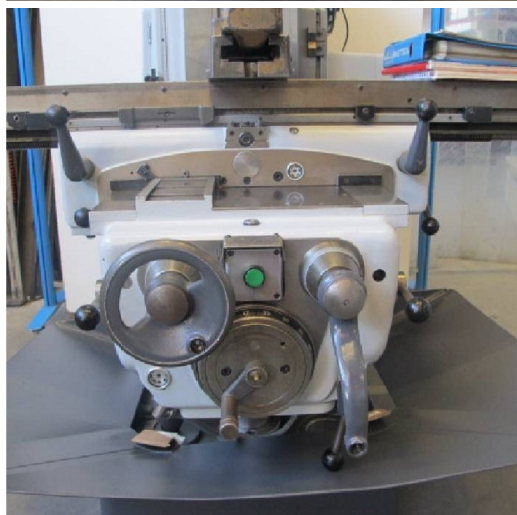
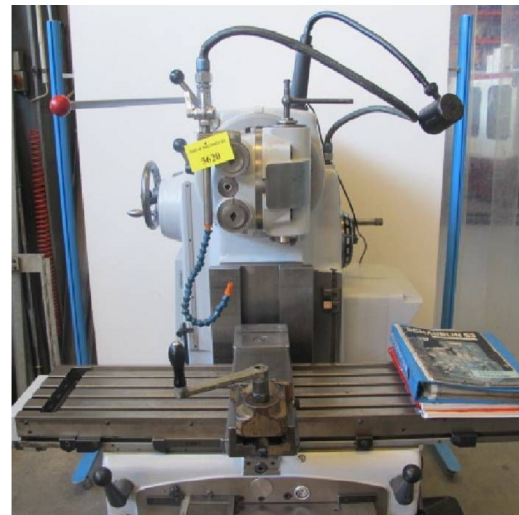
HD pictures and videos on request.

All data such as technical specifications, weight, dimensions, illustrations are indicative and subject to change without notice.



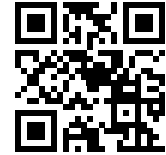
Inventory N° 5620

## Pictures

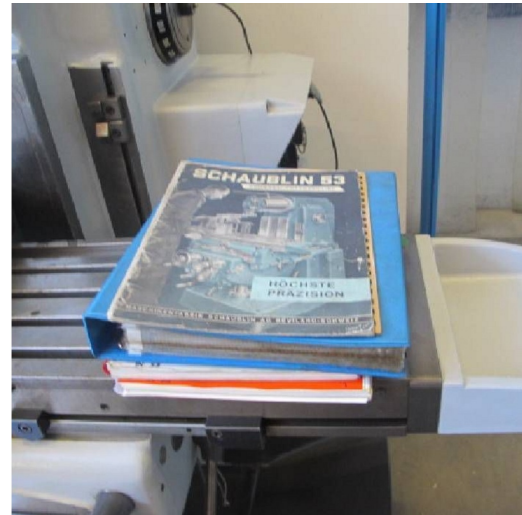
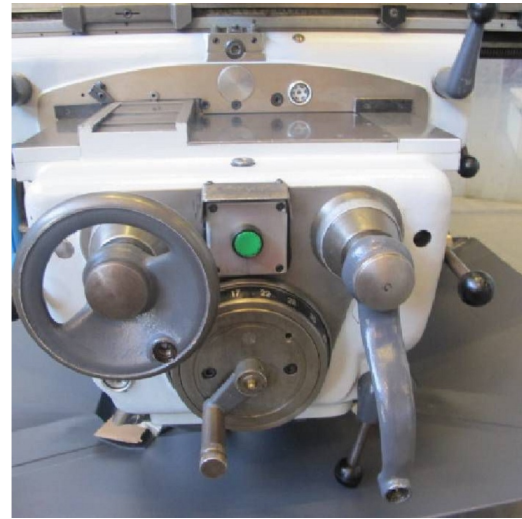


HD pictures and videos on request.

All data such as technical specifications, weight, dimensions, illustrations are indicative and subject to change without notice.

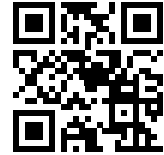


Inventory N° 5620

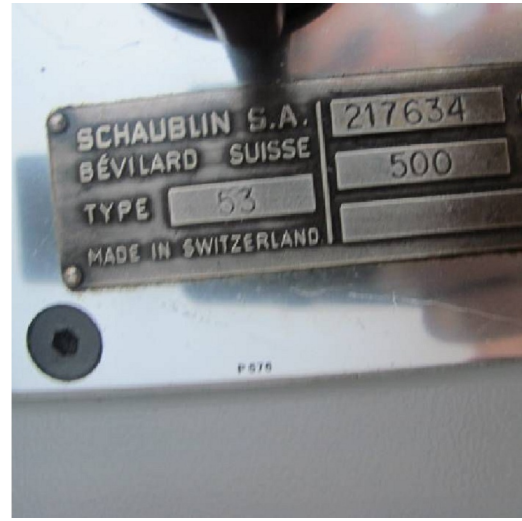


HD pictures and videos on request.

All data such as technical specifications, weight, dimensions, illustrations are indicative and subject to change without notice.



Inventory N° 5620



HD pictures and videos on request.

All data such as technical specifications, weight, dimensions, illustrations are indicative and subject to change without notice.