

Machine

Inventory N°	17066
Description	Bevelling machine
Brand	EBOSA
Model	D 38
Serial No	417
Year	1971



Heading

Max. turning diameter	40 mm
Longitudinal travel (x-axis)	6.5 mm
Cross traverse (y-axis)	7 mm
Speeds from	5800 t/min
Voltage	380 V
Motor capacity	0.73 kW

Over-all dimensions

Over-all-dimension (length-width-height)	1000x800x1270 mm
Weight	290 Kg

Accessories

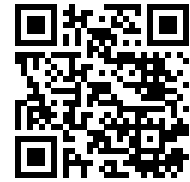
None

Pictures

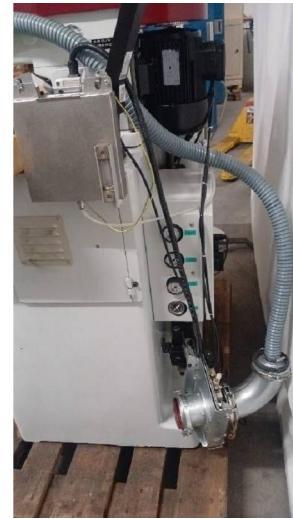


HD pictures and videos on request.

All data such as technical specifications, weight, dimensions, illustrations are indicative and subject to change without notice.



Inventory N° **17066**



HD pictures and videos on request.
All data such as technical specifications, weight, dimensions, illustrations are indicative and subject to change without notice.