

Machine

Inventory N° **17060**
Description **Tour cnc**

Brand **WILLEMIN MACODEL**
Model **W203**
Serial No **218**
Year **2007**



Heading

Control **FANUC**

Capacity (work piece):

Longitudinal traverse (x-axis) **500 mm**
Transversal stroke (z axis) **200 mm**
Workpiece dia. **100 mm**

Stroke speed

Axe x **20 m/min**
Axe z **20 m/min**
Feed power, x-/z-axis **350 daN**
Axe c **0.0001 °**

Table

Dimension of supporting table **650x160 mm**
T-slots **5**
Turning tools **2x**

Spindle

Spindle speed **1500-7000 tr/min**
Height between table and die **32 mm**
Overall dimensions: l x w x h **1300x1500x2000 mm**
Machine's weight **1100 kg**

Number hours

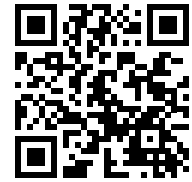
Number hours (milling) **16653 h**

Accessories

Oil mist extractor **1**
Coolant unit **1**
Tôle de rétention **1**

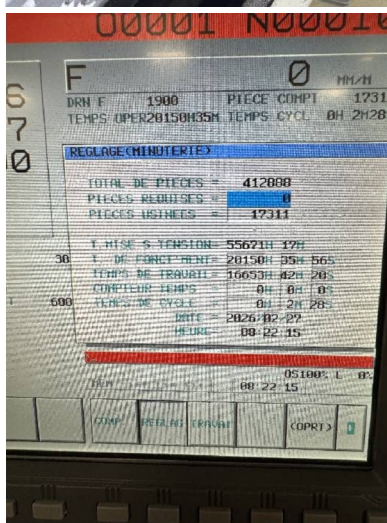
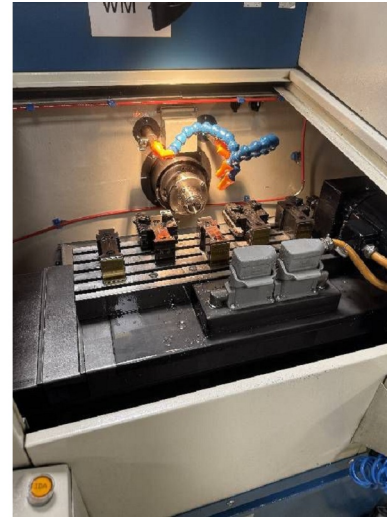
HD pictures and videos on request.

All data such as technical specifications, weight, dimensions, illustrations are indicative and subject to change without notice.



Inventory N° 17060

Pictures



HD pictures and videos on request.

All data such as technical specifications, weight, dimensions, illustrations are indicative and subject to change without notice.