

Machine

Inventory N° **17057**
Description Collaborative polishing cell

Brand **CREVOISIER**
Model **C710**
Serial No **02**
Year **2020**



Heading

Number hours ~ 2'500 h
Robot UR 3 e-series
Motor Crevoisier
Type C5100
Dust extraction 14 m/s

Over-all dimensions

Over-all-dimension (length-width-height) 1500x1230x2100 mm
Weight ~ 700 Kg

Power supply

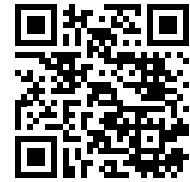
Voltage 3x400 V
Frequency 50-60 Hz
Pressure 6 bars
Power 15 kW

Accessories

None

HD pictures and videos on request.

All data such as technical specifications, weight, dimensions, illustrations are indicative and subject to change without notice.



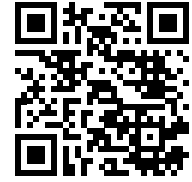
Inventory N° 17057

Pictures

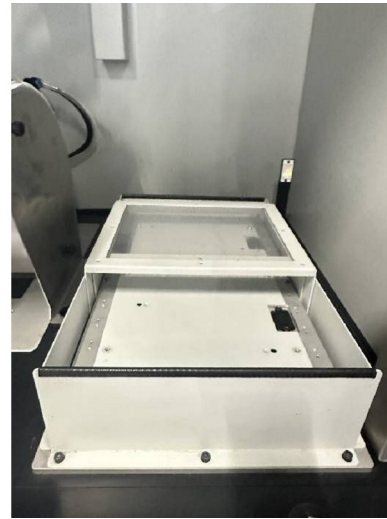


HD pictures and videos on request.

All data such as technical specifications, weight, dimensions, illustrations are indicative and subject to change without notice.

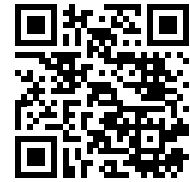


Inventory N° 17057

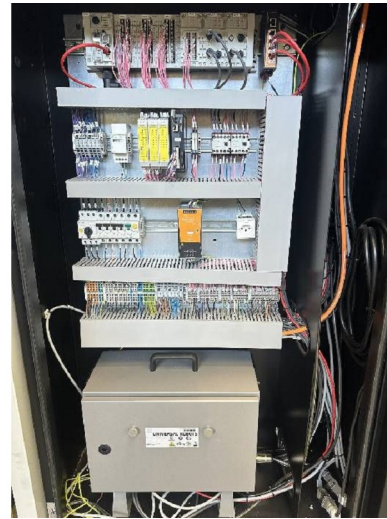


HD pictures and videos on request.

All data such as technical specifications, weight, dimensions, illustrations are indicative and subject to change without notice.



Inventory N° 17057



HD pictures and videos on request.

All data such as technical specifications, weight, dimensions, illustrations are indicative and subject to change without notice.