

## Machine

Inventory N°	<b>16286</b>
Description	Milling machine
Brand	<b>SCHAUBLIN</b>
Model	<b>53N</b>
Serial No	<b>313090</b>
Year	<b>N/A</b>



## Heading

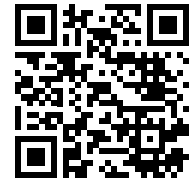
Readout	HEIDENHAIN
Axes	X / Y
Number of axis total	
Longitudinal traverse (x-axis)	700 mm
Cross traverse (y-axis)	250 mm
Vertical travel (z axis)	490 mm
Table length	1100 mm
Table width	305 mm
Taper size	40 ISO
Spindle speed	38-1510 t/min
<b>Over-all dimensions</b>	
Over-all-dimension (lenght-width-height)	2300x1700x2000 mm
Weight	2500 Kg
<b>Tool cabinet</b>	
Over-all-dimension (lenght-width-height)	750x710x1000 mm
Weight	410 Kg
<b>Carriage</b>	
Over-all-dimension (lenght-width-height)	800x500x1000 mm
Weight	120 Kg

## Accessories

voir photos	1
-------------	---

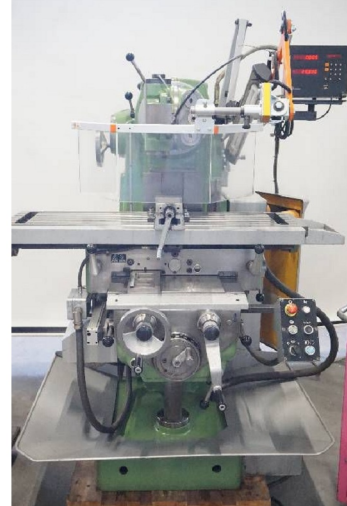
HD pictures and videos on request.

All data such as technical specifications, weight, dimensions, illustrations are indicative and subject to change without notice.

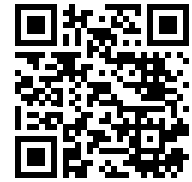


Inventory N° 16286

**Pictures**



HD pictures and videos on request.  
All data such as technical specifications, weight, dimensions, illustrations are indicative and subject to change without notice.

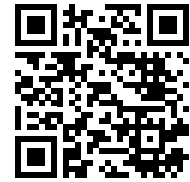


Inventory N° 16286



HD pictures and videos on request.

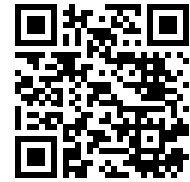
All data such as technical specifications, weight, dimensions, illustrations are indicative and subject to change without notice.



Inventory N° 16286



HD pictures and videos on request.  
All data such as technical specifications, weight, dimensions, illustrations are indicative and subject to change without notice.

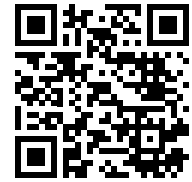


Inventory N° 16286



HD pictures and videos on request.

All data such as technical specifications, weight, dimensions, illustrations are indicative and subject to change without notice.

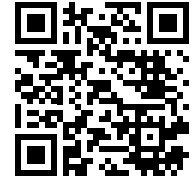


Inventory N° 16286

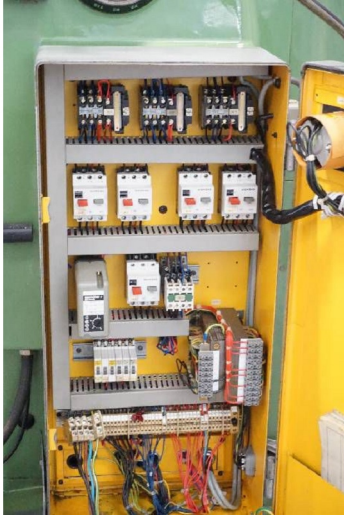


HD pictures and videos on request.

All data such as technical specifications, weight, dimensions, illustrations are indicative and subject to change without notice.



Inventory N° **16286**



HD pictures and videos on request.

All data such as technical specifications, weight, dimensions, illustrations are indicative and subject to change without notice.