

Machine

Inventory N°	15817
Description	Swiss-type cnc lathe
Brand	STAR
Model	SA-12
Serial No	041017 (028)
Year	N/A



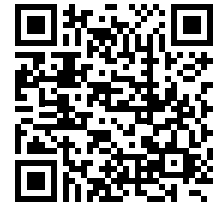
Heading

Cnc control	FANUC Series
Number of axis total	
Number of spindles	
Principal spindle	
Bar maxi diameter	mm
Max. machinable length	mm
Total stroke	mm
Spindle speed	t/min
Spindle motor	kW
Axe c	°
Sub spindle	
Bar maxi diameter	mm
Axe z	mm
Spindle speed	t/min
Spindle motor	kW
Axe c	°
Number of tool stations	
Turret	
Number of positions	
Number of motorized positions	
Turning tools	
Speed	t/min
Power	Kw
Voltage	Volts
Installed power	kW
Number hours	

Over-all dimensions

HD pictures and videos on request.

All data such as technical specifications, weight, dimensions, illustrations are indicative and subject to change without notice.



Inventory N° **15817**

Over-all-dimension (length-width-height) 2000x900x1800 mm

Machine's weight 700 Kg

Barloader

Over-all-dimension (length-width-height) 5300x600x1200 mm

Weight 700 Kg

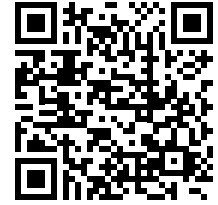
Accessories

None

Pictures



HD pictures and videos on request.
All data such as technical specifications, weight, dimensions, illustrations are indicative and subject to change without notice.

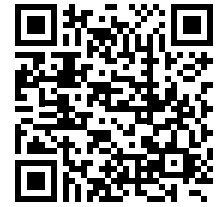


Inventory N° 15817

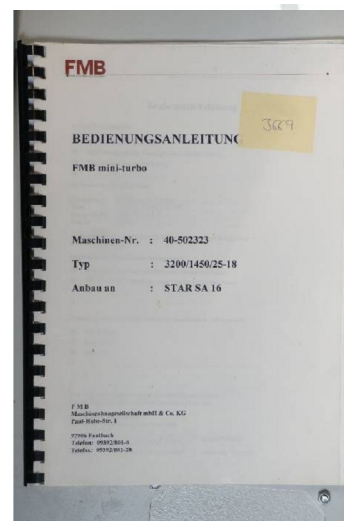
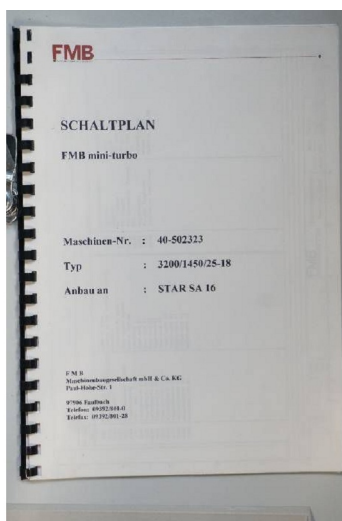
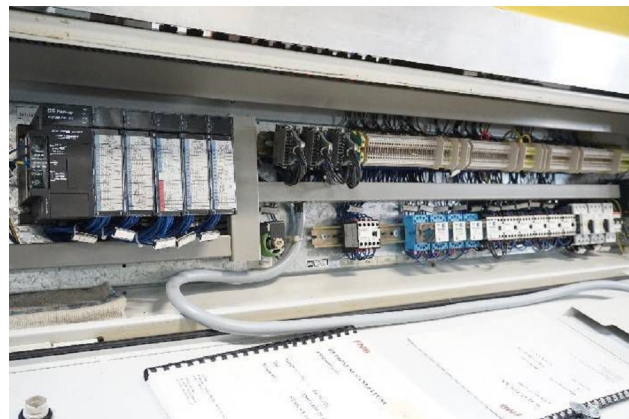


HD pictures and videos on request.

All data such as technical specifications, weight, dimensions, illustrations are indicative and subject to change without notice.



Inventory N° 15817



HD pictures and videos on request.

All data such as technical specifications, weight, dimensions, illustrations are indicative and subject to change without notice.