

Machine

Inventory N°	15786
Description	Vertical machining center
Brand	WILLEMIN MACODEL
Model	W408S
Serial No	359
Year	2007



Heading

Control	FANUC Series
Number of axis simultaneous	5
Longitudinal traverse (x-axis)	250 mm
Cross traverse (y-axis)	200 mm
Vertical travel (z axis)	300 mm
Swivelling range	
B-axis	140 °
C axis	360 °
Tool changer:	
Number of positions	24
Time of tool changing	0.8 s
Taper size	HSK E40
Spindle speed	
Stepless	30000 t/min
Torque max.	4.2 Nm
Rapid traverse	30 m/min
Voltage	400V, 50Hz V,Hz
Spindle motor	10 kW
Total power required	18 kVA
Over-all dimensions	
Over-all-dimension (length-width-height)	1400x1630x2440 mm
Weight	~ 1700 Kg
Number hours (under power)	53674 h

Accessories

None

HD pictures and videos on request.

All data such as technical specifications, weight, dimensions, illustrations are indicative and subject to change without notice.

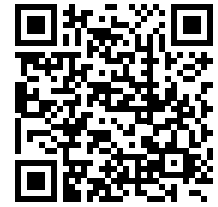


Inventory N° 15786

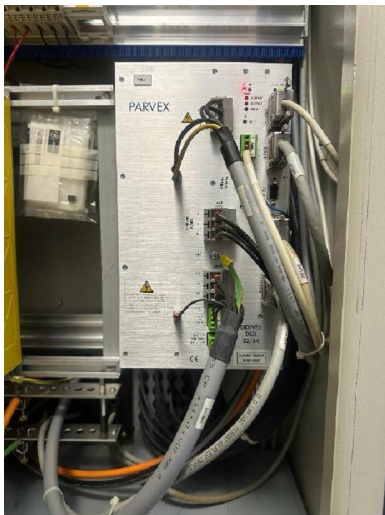
Pictures



HD pictures and videos on request.
All data such as technical specifications, weight, dimensions, illustrations are indicative and subject to change without notice.



Inventory N° 15786



HD pictures and videos on request.

All data such as technical specifications, weight, dimensions, illustrations are indicative and subject to change without notice.



Inventory N° 15786



HD pictures and videos on request.
All data such as technical specifications, weight, dimensions, illustrations are indicative and subject to change without notice.



Inventory N° **15786**



HD pictures and videos on request.

All data such as technical specifications, weight, dimensions, illustrations are indicative and subject to change without notice.