

## Machine

Inventory N°	<b>15405</b>
Description	Fraiseuse cnc
Brand	<b>FANUC ROBODRILL</b>
Model	<b>Robodrill a-T21iD</b>
Serial No	<b>P043UN415</b>
Year	<b>2004</b>



## Heading

Control	FANUC Series
Number of axis	5
Spindle speed (rpm)	10000 t/min
Max. stroke	54 m/min
Arbors	ISO30
Tools weight max.	kg
Max. tool-weight	2 (23) kg
Longitudinal travel (x-axis)	500 mm
Cross traverse (y-axis)	400 mm
Vertical travel (z axis)	330 mm
<b>Renishaw</b>	OMI-2
Tool break control	Blum

## Table

Dimension of supporting table	650x400 mm
T-slots	3 x
Dividing	Peiseler AWU

## Number hours

Number hours (under power)	29535 h
Number hours (working process)	142 h
Number hours (milling)	6670 h

## Power supply

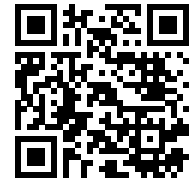
Operating voltage	3x400 VAC
Power	12 kVA
Over-all-dimension (length-width-height)	1600x2000x2400 mm
Weight	2100 kg

## Accessories

<b>Coolant unit</b>	1
---------------------	---

HD pictures and videos on request.

All data such as technical specifications, weight, dimensions, illustrations are indicative and subject to change without notice.



Inventory N° 15405

Arbors

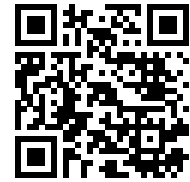
2

Pictures

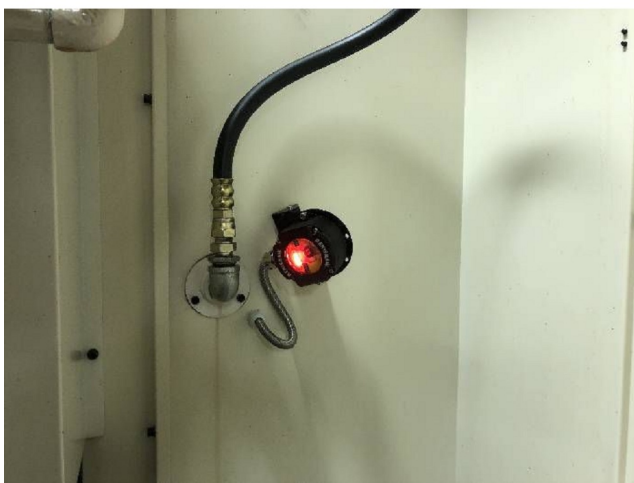
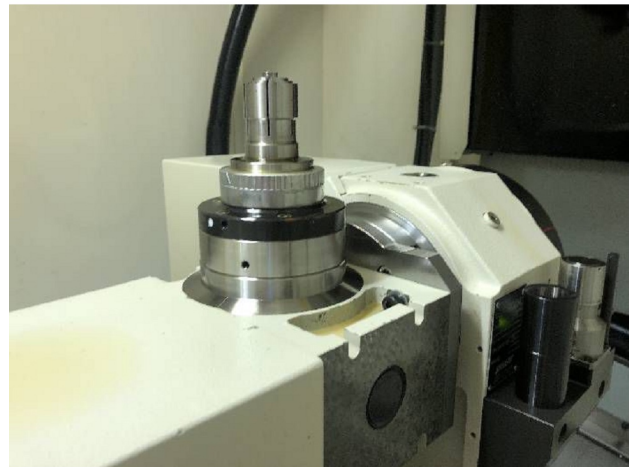
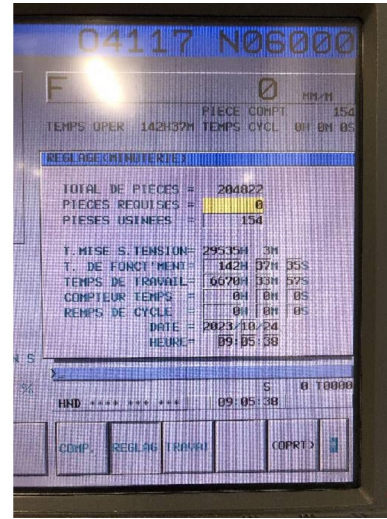


HD pictures and videos on request.

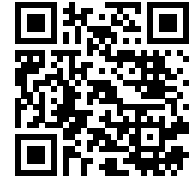
All data such as technical specifications, weight, dimensions, illustrations are indicative and subject to change without notice.



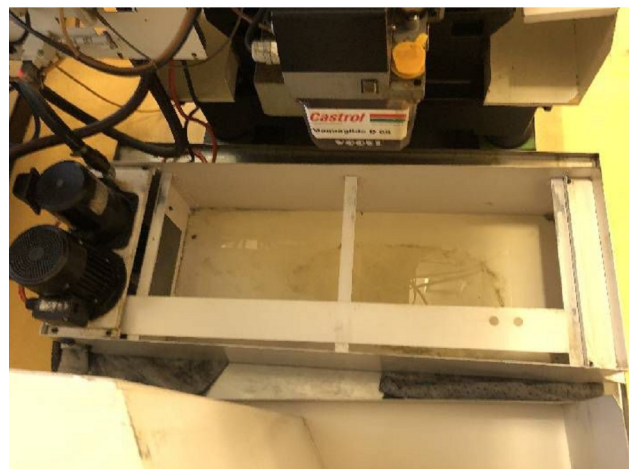
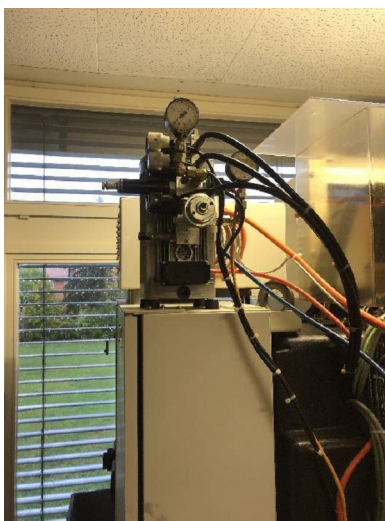
Inventory N° 15405



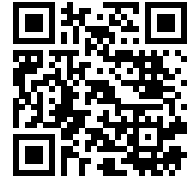
HD pictures and videos on request.  
All data such as technical specifications, weight, dimensions, illustrations are indicative and subject to change without notice.



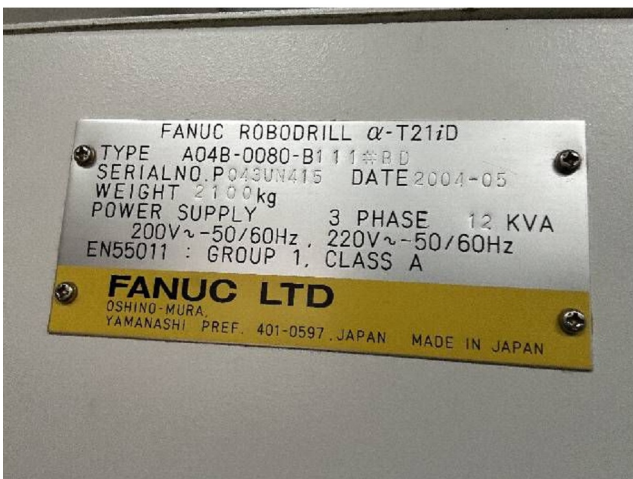
Inventory N° 15405



HD pictures and videos on request.  
All data such as technical specifications, weight, dimensions, illustrations are indicative and subject to change without notice.



Inventory N° **15405**



HD pictures and videos on request.

All data such as technical specifications, weight, dimensions, illustrations are indicative and subject to change without notice.