



Machine

Inventory N°	15285
Description	Eccentric press
Brand	SANGIACOMO
Model	T 15 CE
Serial No	13870
Year	2012



Heading

Cutting power	150 kN
Strokes per minute	165 H/min
Upper extractor	
Motor power	1.1 kW
Adjustable stroke	8-60 mm
Ram adjustment	40 mm
Distance table-ram	260 mm
C-frame depth	155 mm
Distance between	160 mm
Max. thickness	45 mm
Height of work-surface	795 mm
Table bore diameter	80 mm
Slide clamping surface	104x230 mm
Ram hole dia	Ø25x65 mm
Over-all dimensions	1650x900x1070 mm

Accessories

None

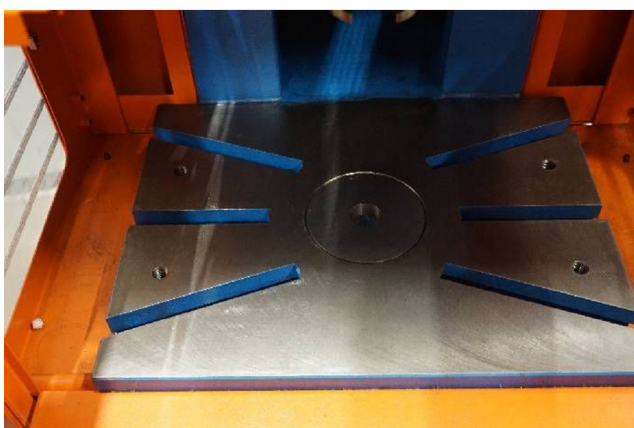
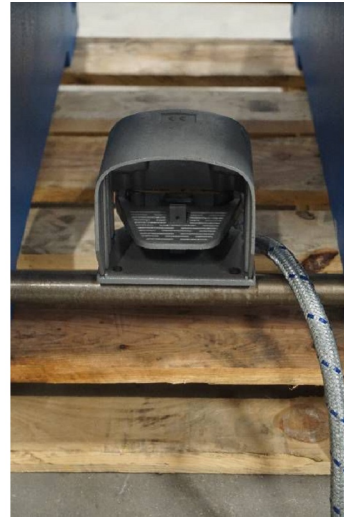
HD pictures and videos on request.

All data such as technical specifications, weight, dimensions, illustrations are indicative and subject to change without notice.



Inventory N° 15285

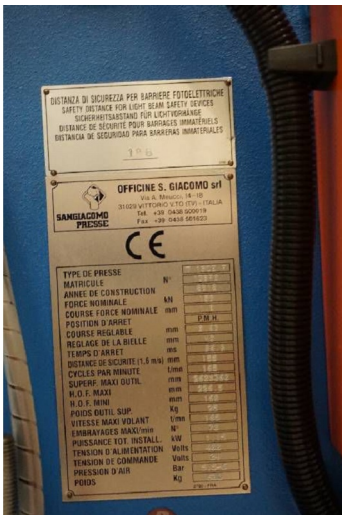
Pictures



HD pictures and videos on request.
All data such as technical specifications, weight, dimensions, illustrations are indicative and subject to change without notice.



Inventory N° **15285**



HD pictures and videos on request.

All data such as technical specifications, weight, dimensions, illustrations are indicative and subject to change without notice.