



Machine

Inventory N° **15246**

Description

Brand **WAHLI**

Model **Multi 76**

Serial No **235**

Year **N/A**



Heading

Centre height	125 mm
Distance between centres	350 mm
Course vertical	160 mm
Transversal travel	180 mm
Automatic forward feed	0,05 à 1.25 mm/t
Threaded	0,2 à 5 mm
Pitch:	21,24,27,30,36,40
Pitch:	50,54,56,60,70,72
Working speed	75 - 2120 min ⁻¹

Headstock

Spindle height	70 à 230 mm
Taper in spindle	W20 (Schaublin)
Taper spindle threaded	M37.6 x 3
Diameter	ø37.97 x 10 mm
Spindle hole	ø20 mm

Tailstock

Spindle stroke	95 mm
Internal spindle taper	Morse 2

Over-all dimensions

Over-all-dimension (length-width-height)	1250x730x1460 mm
Weight	350 Kg

Accessories

Tool holder

Tail centre

Drill chuck

Grinding wheel

Jaw chuck

HD pictures and videos on request.

All data such as technical specifications, weight, dimensions, illustrations are indicative and subject to change without notice.



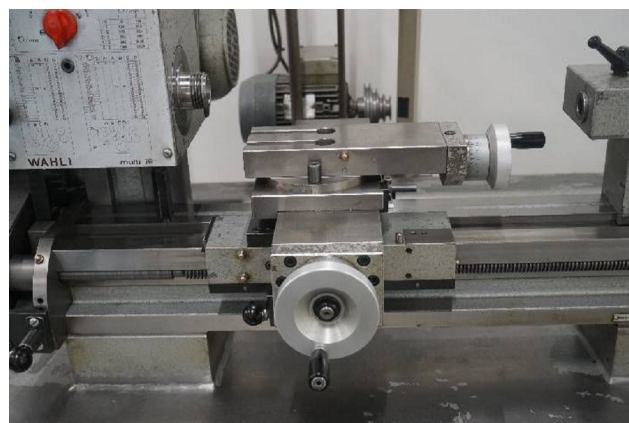
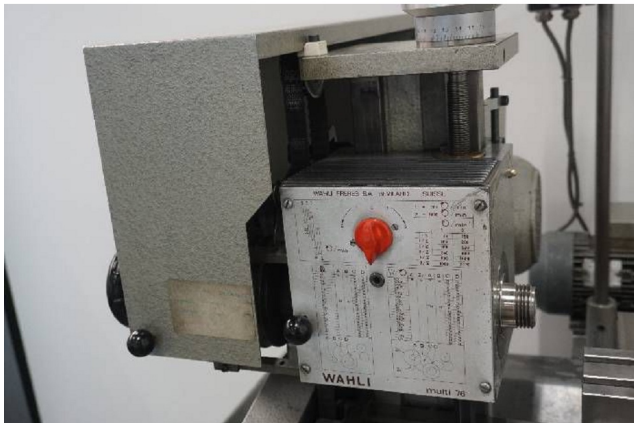
Inventory N° 15246

Milling unit

Brosse

Jeu de pinces W20

Pictures

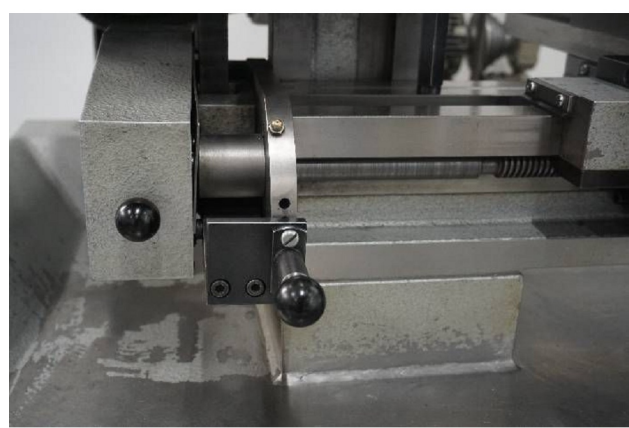
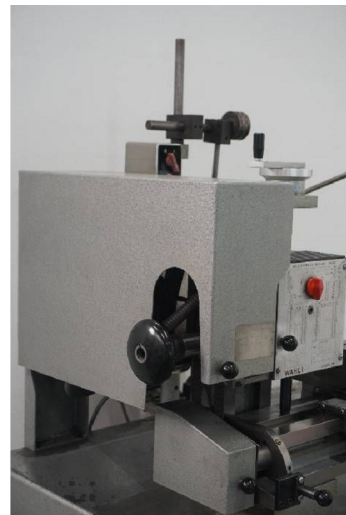
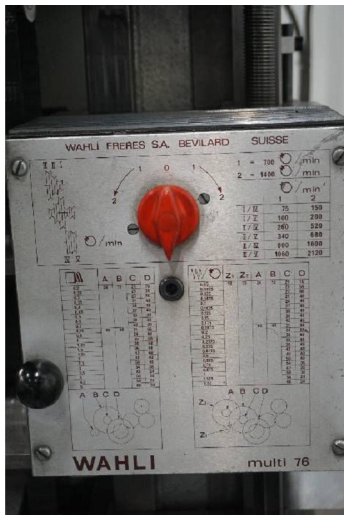


HD pictures and videos on request.

All data such as technical specifications, weight, dimensions, illustrations are indicative and subject to change without notice.

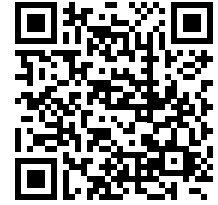


Inventory N° 15246

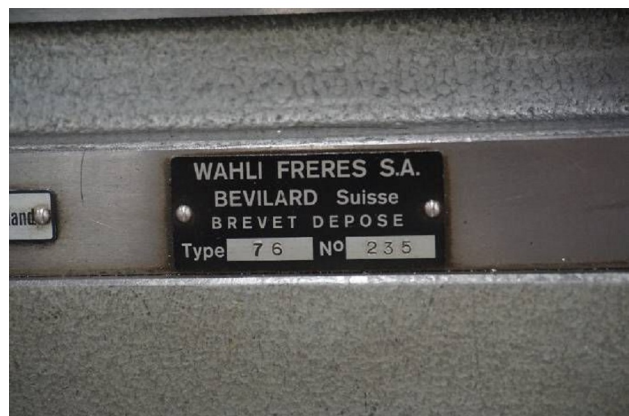
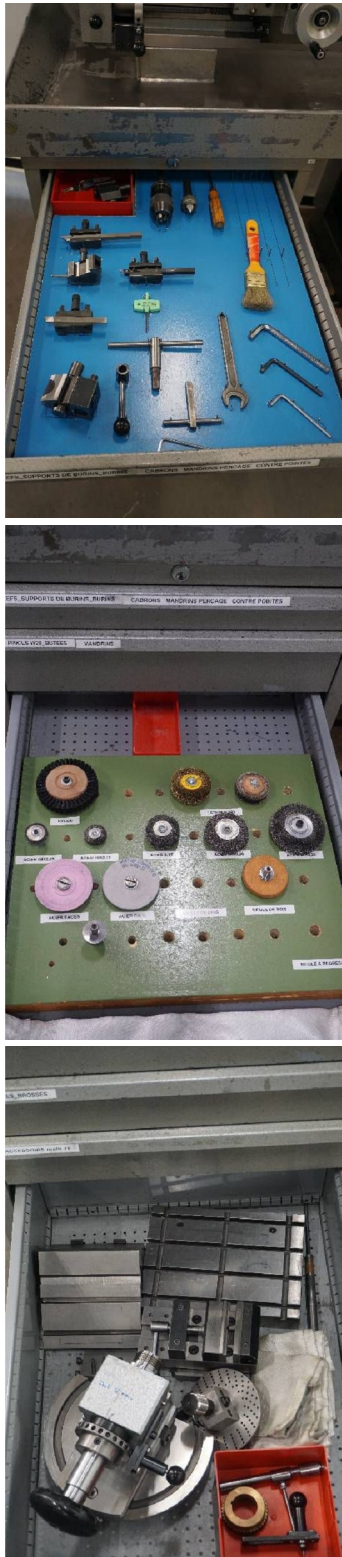


HD pictures and videos on request.

All data such as technical specifications, weight, dimensions, illustrations are indicative and subject to change without notice.



Inventory N° 15246



HD pictures and videos on request.

All data such as technical specifications, weight, dimensions, illustrations are indicative and subject to change without notice.