

## Machine

Inventory N°	<b>15113</b>
Description	Wire eroder
Brand	<b>CHARMILLES</b>
Model	<b>ROBOFIL 2050 TW</b>
Serial No	
Year	<b>REV 2010</b>



## Heading

Dielectric aggregate	oil
Min. wire diameter	0.05 mm
Max. wire diameter	0.33 mm
Dimension of the workpice	max. mm
Table load max.	500 kg
Longitudinal traverse (x-axis)	320 mm
Cross traverse (y-axis)	220 mm
Vertical travel (z axis)	160 mm
Strkes u, v	±48 mm
Clearance/heigt	max +/- 30 °
Contents	211 l

## Power supply

Operating voltage	3x400 VAC
Nominal current	22 A
Total power required	15 kVA

## Over-all dimensions

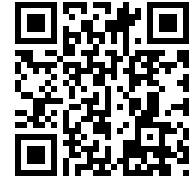
Over-all-dimension (lenght-width-height)	2320x2310x2320 mm
Machine's weight	3000 Kg

## Accessories

None

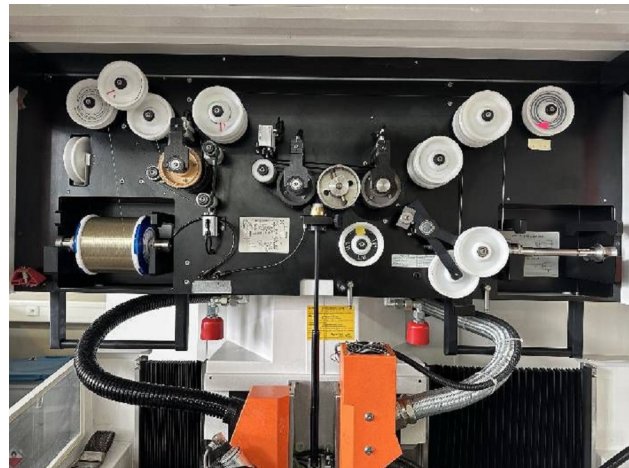
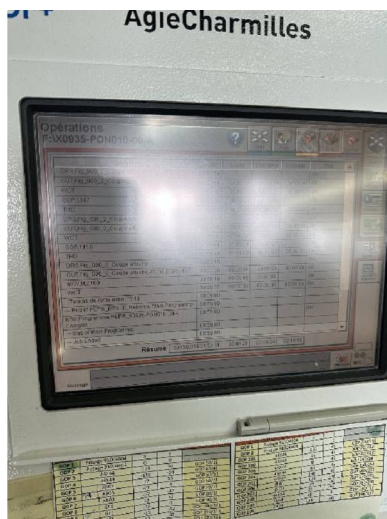
HD pictures and videos on request.

All data such as technical specifications, weight, dimensions, illustrations are indicative and subject to change without notice.

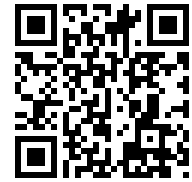


Inventory N° 15113

**Pictures**



HD pictures and videos on request.  
All data such as technical specifications, weight, dimensions, illustrations are indicative and subject to change without notice.

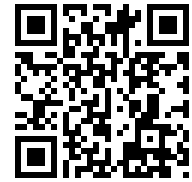


Inventory N° 15113



HD pictures and videos on request.

All data such as technical specifications, weight, dimensions, illustrations are indicative and subject to change without notice.



Inventory N° **15113**



HD pictures and videos on request.

All data such as technical specifications, weight, dimensions, illustrations are indicative and subject to change without notice.