

Machine

| | |
|--------------|------------------------|
| Inventory N° | 15108 |
| Description | Wire eroder |
| Brand | CHARMILLES |
| Model | ROBOFIL 6050 TW |
| Serial No | 136056 |
| Year | 2007 |



Heading

| | |
|---------|-----------------|
| Type | eau / wasser / |
| Control | Win XP / Orange |

Table

| | |
|----------------------------|-----------------|
| Dimension of the workpiece | 1260x690x360 mm |
| Range of weight | 800 kg |

Travels

| | |
|--------------------------------|---------|
| Longitudinal traverse (x-axis) | 630 mm |
| Cross traverse (y-axis) | 400 mm |
| Vertical travel (z axis) | 160 mm |
| Strkes u, v | ±48 mm |
| Resolution | 0.5 µm |
| Avance manuelle max. | 15 mm/s |

Wire

| | |
|--------------------------------|-------------|
| Wire unwinding | 2-15 mm/min |
| Wire tensioning | 3-30 N |
| Tool orthogonal clearance ext. | 0-30 ° |
| Min. wire diameter | 0.050 mm |
| Max. wire diameter | 0.300 mm |

Tank

| | |
|--|-----------------|
| Over-all-dimension (lenght-width-height) | 2150x800x420 mm |
| Capacity (work piece): | 900 l |
| système de filtration | 3 cartouches |

Tank

| | |
|--|-----------------|
| Over-all-dimension (lenght-width-height) | 1420x770x420 mm |
| Capacity (work piece): | 450 l |
| Flushing | 0-25 bar |
| Niveau sonore | 78 dB |

HD pictures and videos on request.

All data such as technical specifications, weight, dimensions, illustrations are indicative and subject to change without notice.



Inventory N° 15108

Power supply

| | |
|----------------------|-----------------|
| Operating voltage | 3x400 3P+PE VAC |
| Nominal current | 22 A |
| Total power required | 25 kVA |

Coolant unit

| | |
|---------------|----------|
| Max. pressure | 4 bar |
| Flow | 17 l/min |

Air pressure

| | |
|------------------|---------|
| Pressure of work | 6-7 bar |
| Flow | 1 l/min |

Over-all dimensions

| | |
|--|-------------------|
| Over-all-dimension (length-width-height) | 2663x2610x2380 mm |
| Surface on floor | 4663x3610 mm |
| Weight | 4100 kg |

Number hours

| | |
|--------------------------------|-----------|
| Number hours (under power) | 118'948 h |
| Number hours (working process) | 17'600 h |

Accessories

None

Pictures

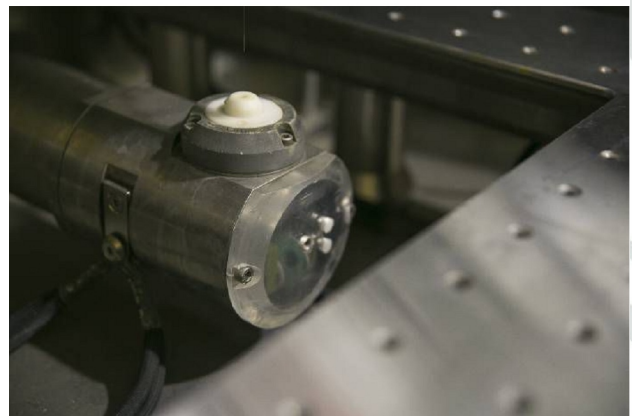


HD pictures and videos on request.

All data such as technical specifications, weight, dimensions, illustrations are indicative and subject to change without notice.

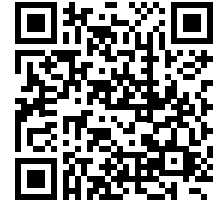


Inventory N° 15108

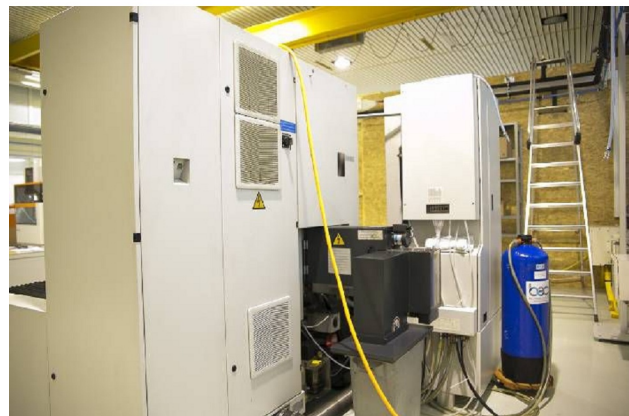
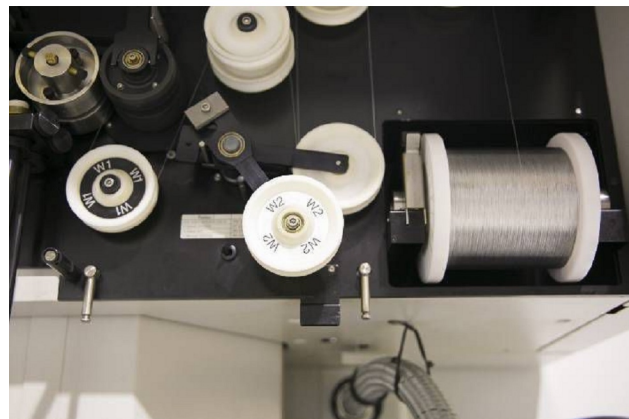


HD pictures and videos on request.

All data such as technical specifications, weight, dimensions, illustrations are indicative and subject to change without notice.



Inventory N° 15108



HD pictures and videos on request.
All data such as technical specifications, weight, dimensions, illustrations are indicative and subject to change without notice.



Inventory N° **15108**



HD pictures and videos on request.

All data such as technical specifications, weight, dimensions, illustrations are indicative and subject to change without notice.

Greub Machines SA
39, bd des Eplatures
CH - 2300 La Chaux-de-Fonds

Tél, + 41 32 925 95 40
Fax +41 32 925 95 45
TVA: CHE-107.032.881

Site : www.greub.ch
E-mail : info@greub.ch