

Machine

Inventory N°	14740
Description	Coolant unit
Brand	MARKSA
Model	CSW 3000 P-PDHH
Serial No	19.000512
Year	2019



Heading

Power supply

Operating voltage	400 V
Power	14.7 Kw
Nominal current	27 A

Cooling system

	R404A
Max. loading capacity	5 kg
Overall dimensions: l x w x h	1200x800x1600 mm
Machine's weight	299 Kg

Accessories

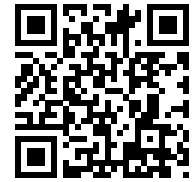
None

Pictures

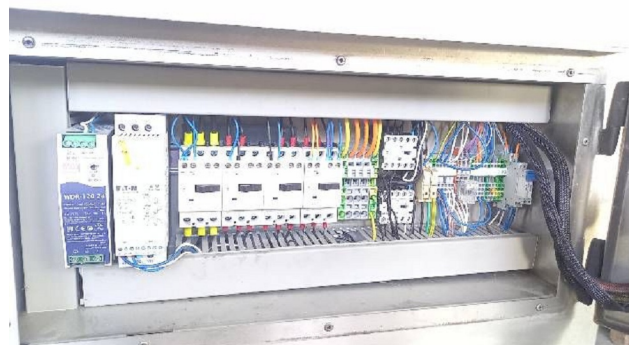


HD pictures and videos on request.

All data such as technical specifications, weight, dimensions, illustrations are indicative and subject to change without notice.

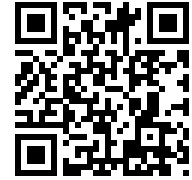


Inventory N° 14740

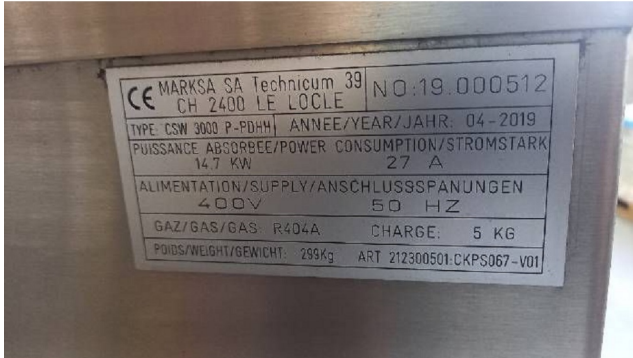


HD pictures and videos on request.

All data such as technical specifications, weight, dimensions, illustrations are indicative and subject to change without notice.



Inventory N° **14740**



HD pictures and videos on request.

All data such as technical specifications, weight, dimensions, illustrations are indicative and subject to change without notice.