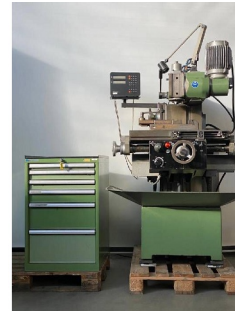


Machine

Inventory N°	14573
Description	Universal milling machine
Brand	SCHAUBLIN
Model	22
Serial No	328682
Year	N/A



Heading

Table length	650 mm
Table width	250 mm
Longitudinal traverse (x-axis)	330 mm
Transversal stroke (x axis)	400 mm
Vertical travel (z axis)	475 mm

Spindle speeds

Number (steps)	12
From	63 t/min
Up to	2800 t/min
Taper size	30 ISO

Feeds stepless:

Longitudinal from	4 mm/min
Up to	500 mm/min
Vertical from	2 mm/min
Up to	200 mm/min
Vertical quill travel	60 mm

Avances rapide

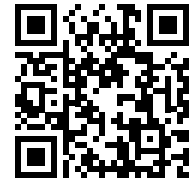
Longitudinal	2.5 m/min
Vertical	1.0 m/min
Motor capacity	2.2 CV
Overall dimensions machine	1600x1100x1650 mm
Weight	950 Kg

Accessories

None

HD pictures and videos on request.

All data such as technical specifications, weight, dimensions, illustrations are indicative and subject to change without notice.



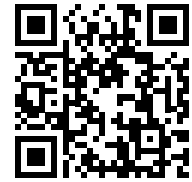
Inventory N° 14573

Pictures



HD pictures and videos on request.

All data such as technical specifications, weight, dimensions, illustrations are indicative and subject to change without notice.

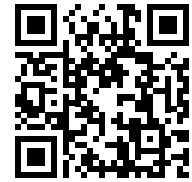


Inventory N° 14573

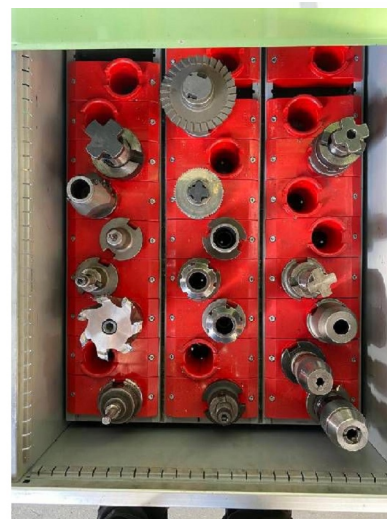
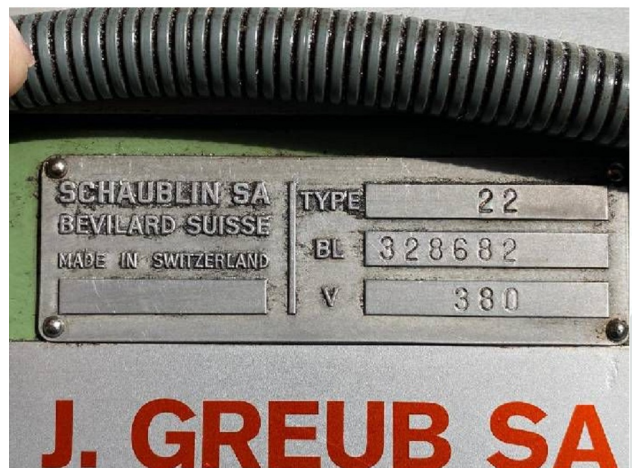
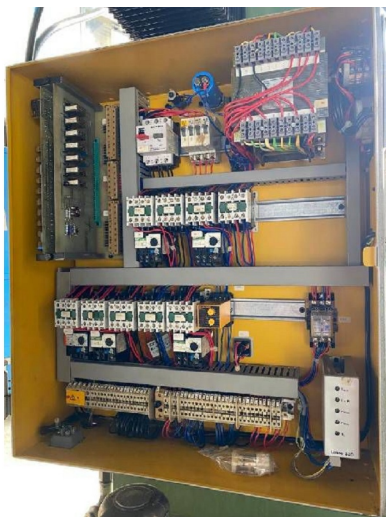


HD pictures and videos on request.

All data such as technical specifications, weight, dimensions, illustrations are indicative and subject to change without notice.

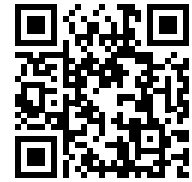


Inventory N° 14573

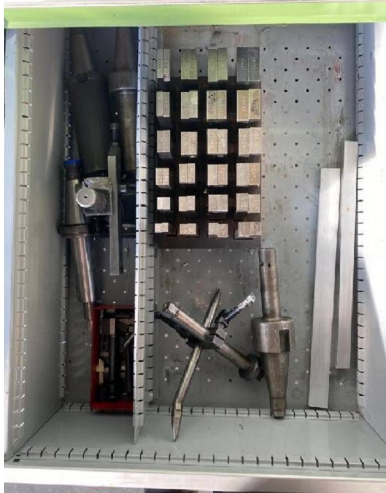
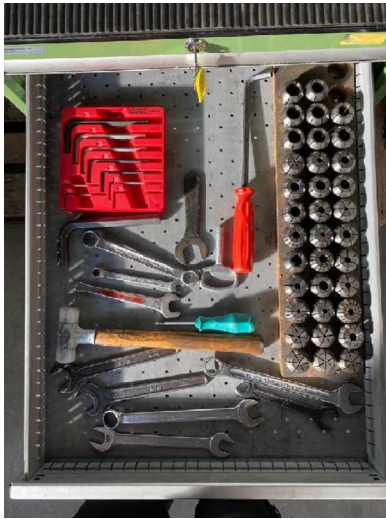


HD pictures and videos on request.

All data such as technical specifications, weight, dimensions, illustrations are indicative and subject to change without notice.



Inventory N° 14573



HD pictures and videos on request.
All data such as technical specifications, weight, dimensions, illustrations are indicative and subject to change without notice.