

Machine

Inventory N°	14494
Description	Universal milling machine
Brand	SCHAUBLIN
Model	13
Serial No	291904
Year	N/A



Heading

Digital readout number of axis	3
Vertical head	
Longitudinal travel (x-axis)	320 mm
Cross traverse (y-axis)	170 mm
Vertical travel (z axis)	370 mm

Spindle speeds

From	58 t/min
Up to	2000 t/min
Taper size	30 ISO
Feeds steps:	10
Longitudinal from	12 mm/min
Up to	400 mm/min
Vertical from	12 mm/min
Up to	400 mm/min
Avances rapide	
Longitudinal	1.2 m/min
Vertical	1.2 m/min
Total power required	3.5 CV

Over-all dimensions

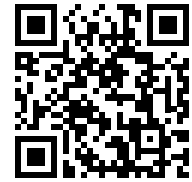
Over-all-dimension (length-width-height)	1500x1100x1600 mm
Weight	690 kg

Accessories

Set collet chucks	1
Set of arbors	1
Etou	1
Tasseau porte-fraise	1

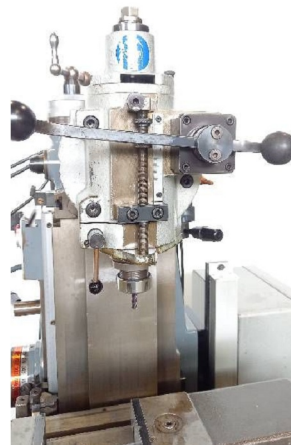
HD pictures and videos on request.

All data such as technical specifications, weight, dimensions, illustrations are indicative and subject to change without notice.



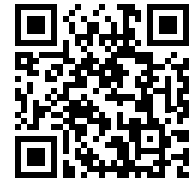
Inventory N° 14494

Pictures

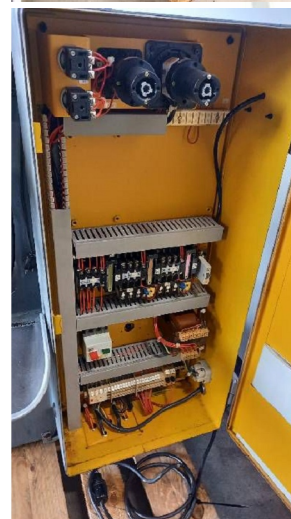


HD pictures and videos on request.

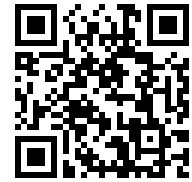
All data such as technical specifications, weight, dimensions, illustrations are indicative and subject to change without notice.



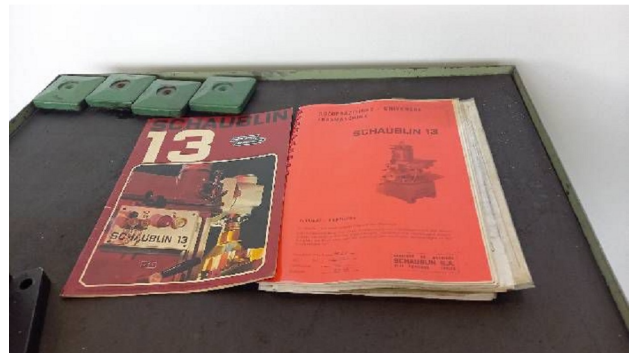
Inventory N° **14494**



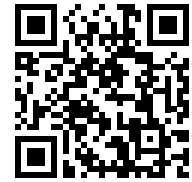
HD pictures and videos on request.
All data such as technical specifications, weight, dimensions, illustrations are indicative and subject to change without notice.



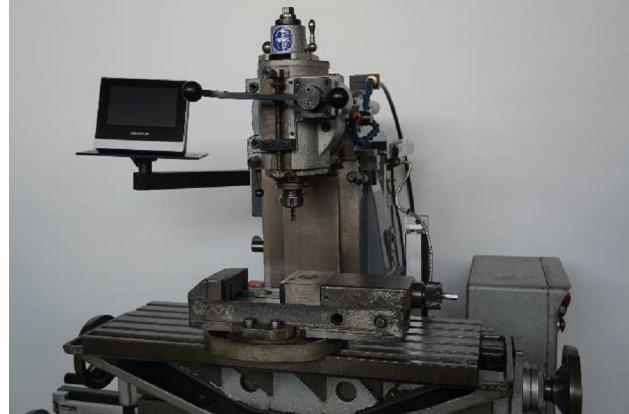
Inventory N° 14494



HD pictures and videos on request.
All data such as technical specifications, weight, dimensions, illustrations are indicative and subject to change without notice.

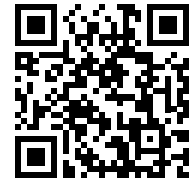


Inventory N° 14494

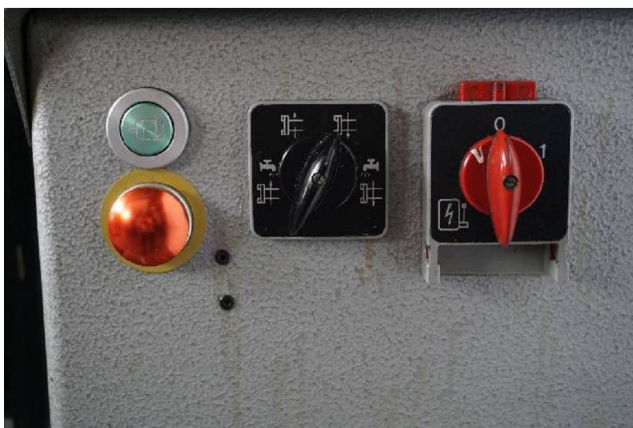


HD pictures and videos on request.

All data such as technical specifications, weight, dimensions, illustrations are indicative and subject to change without notice.

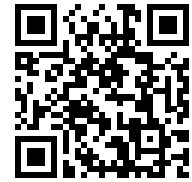


Inventory N° **14494**

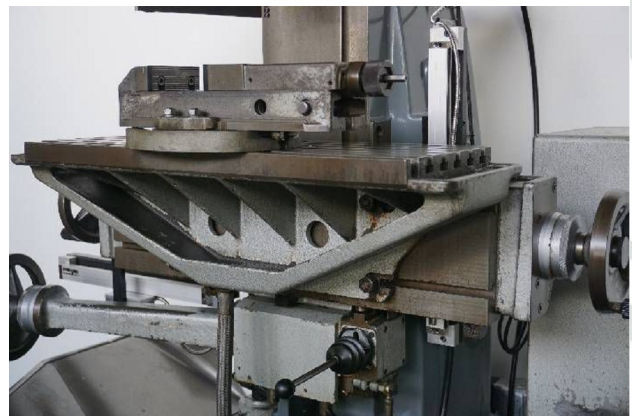
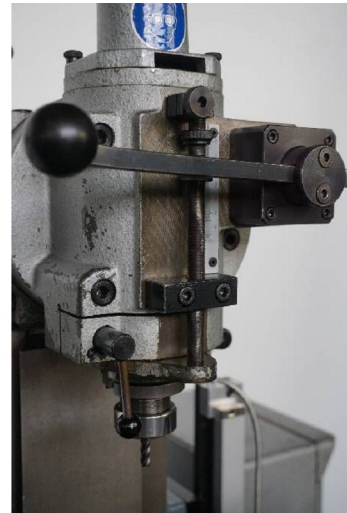


HD pictures and videos on request.

All data such as technical specifications, weight, dimensions, illustrations are indicative and subject to change without notice.

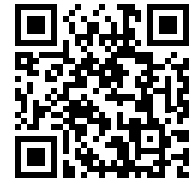


Inventory N° 14494

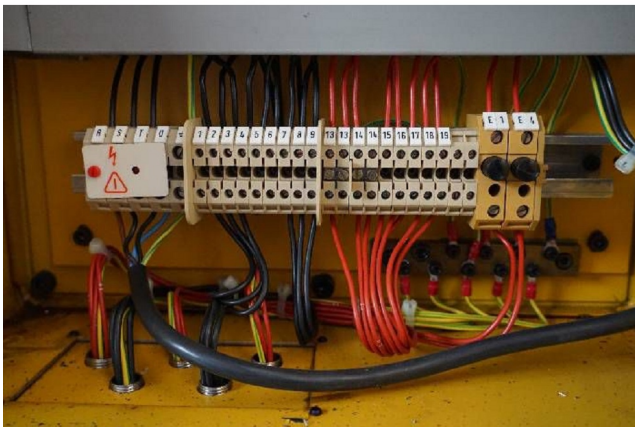
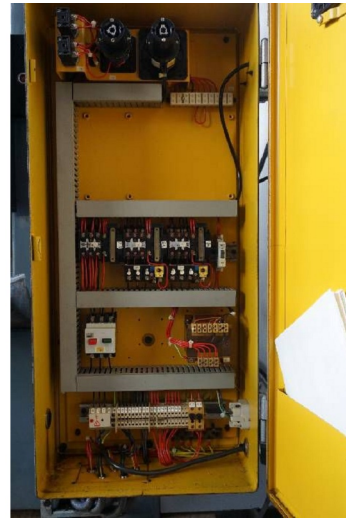
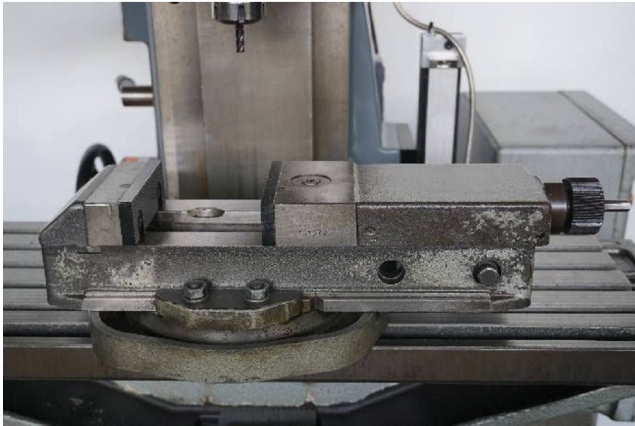


HD pictures and videos on request.

All data such as technical specifications, weight, dimensions, illustrations are indicative and subject to change without notice.



Inventory N° 14494



HD pictures and videos on request.

All data such as technical specifications, weight, dimensions, illustrations are indicative and subject to change without notice.