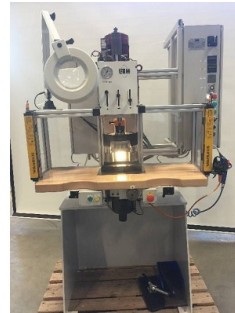




## Machine

Inventory N°	<b>13411</b>
Description	Press
Brand	<b>LBM</b>
Model	<b>EH16</b>
Serial No	<b>12021</b>
Year	<b>2001</b>



## Heading

Force de découpe	1700 daN
Course max du coulisseau	75 mm
Approach speed max	315 mm/s
	50 ms
Number hours	669 h

### Lower extractor

Diameter	16 mm
----------	-------

### Power supply

Operating voltage	3x 400 VAC
Frequency	50 Hz
Nominal current	5.5 A
Installed power	2 kW

### Over-all dimensions

Over-all-dimension (lenght-width-height)	1300x1100x1900 mm
Weight	575 kg

### Accessories

None

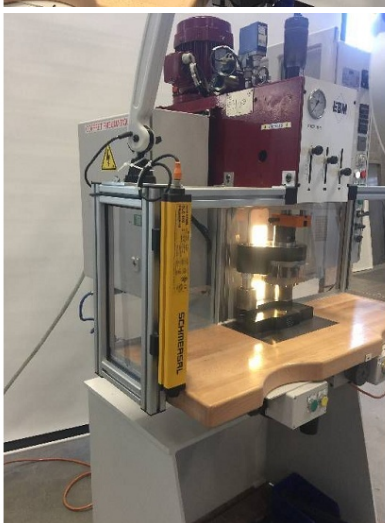
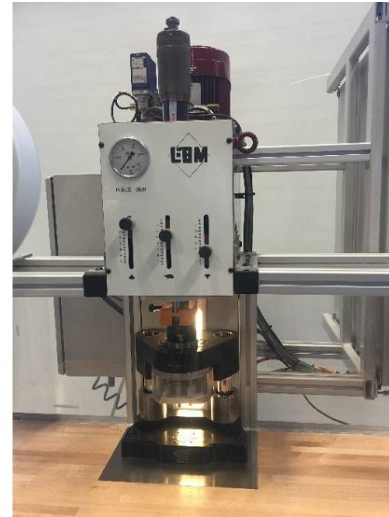
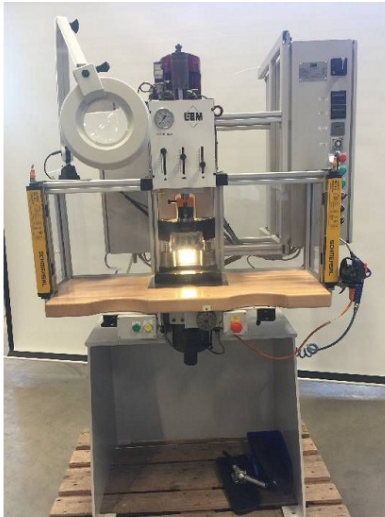
HD pictures and videos on request.

All data such as technical specifications, weight, dimensions, illustrations are indicative and subject to change without notice.



Inventory N° 13411

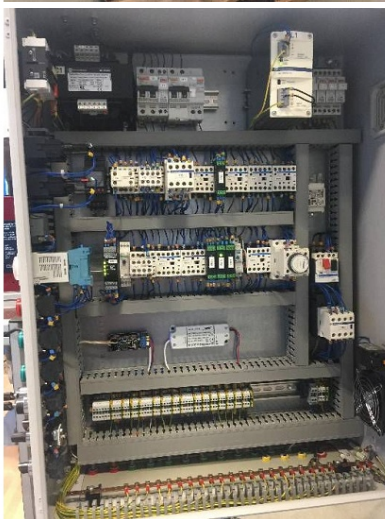
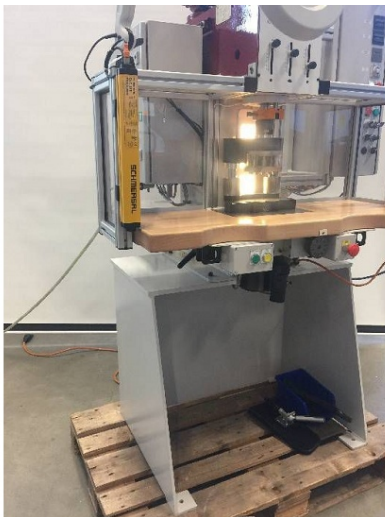
**Pictures**



HD pictures and videos on request.  
All data such as technical specifications, weight, dimensions, illustrations are indicative and subject to change without notice.



Inventory N° 13411

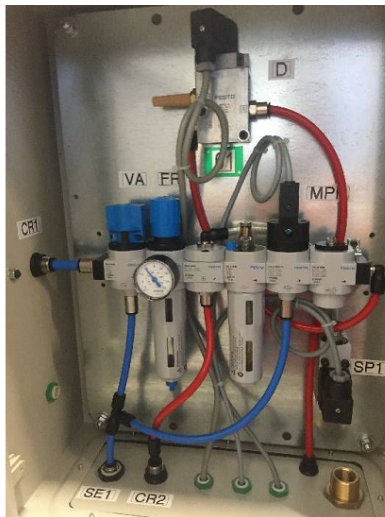
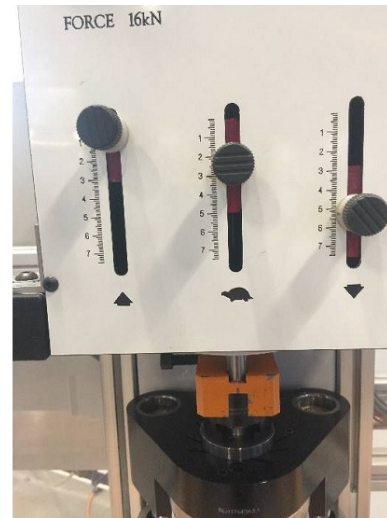
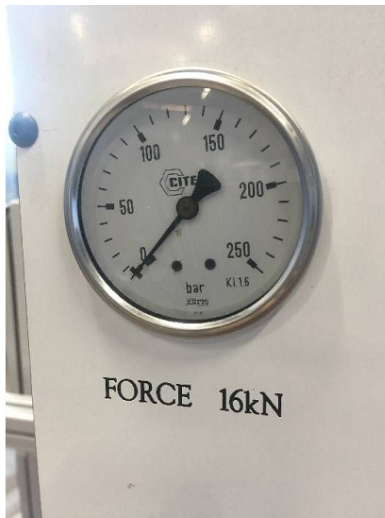


HD pictures and videos on request.

All data such as technical specifications, weight, dimensions, illustrations are indicative and subject to change without notice.



Inventory N° 13411



HD pictures and videos on request.  
All data such as technical specifications, weight, dimensions, illustrations are indicative and subject to change without notice.