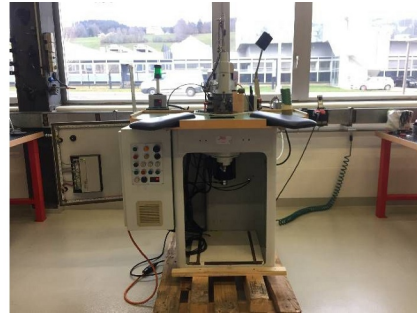


Machine

Inventory N°	13036
Description	Bevelling machine
Brand	EBOSA
Model	D 38
Serial No	
Year	N/A



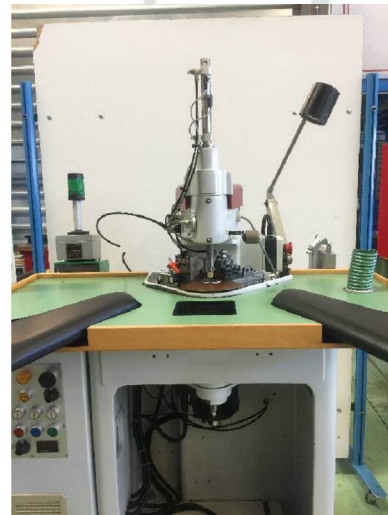
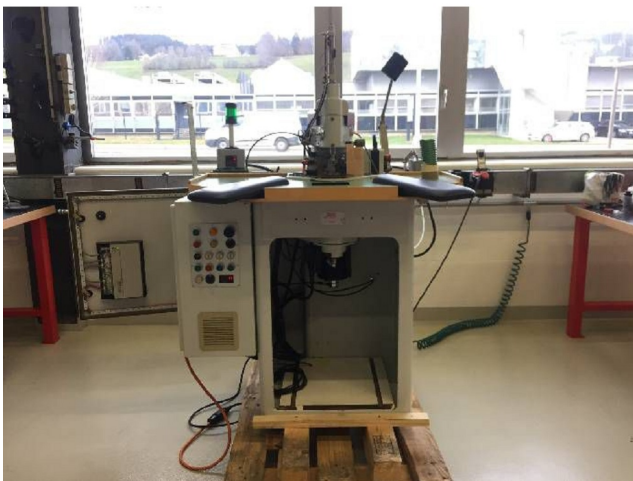
Heading

Max. turning diameter	40 mm
Longitudinal travel (x-axis)	6.5 mm
Cross traverse (y-axis)	6.5 mm
Speeds from	5800 t/min
Motor capacity	10 CV
Over-all-dimension (length-width-height)	1100x1100x1500 mm
Machine's weight	290 Kg

Accessories

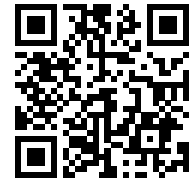
None

Pictures

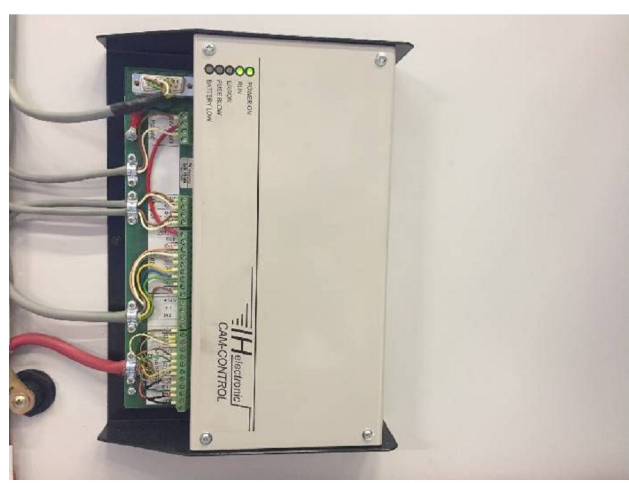
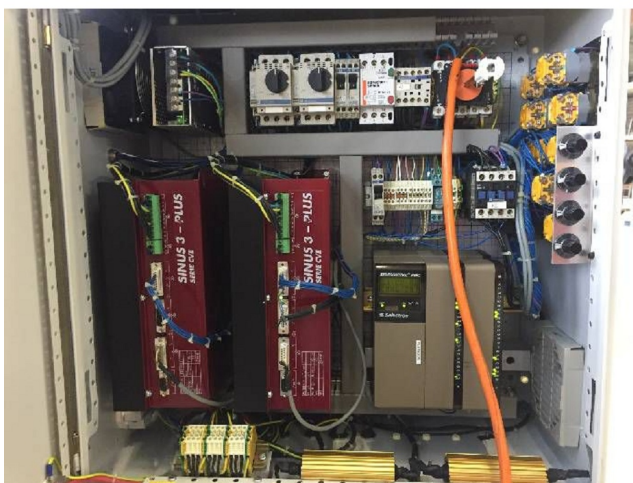
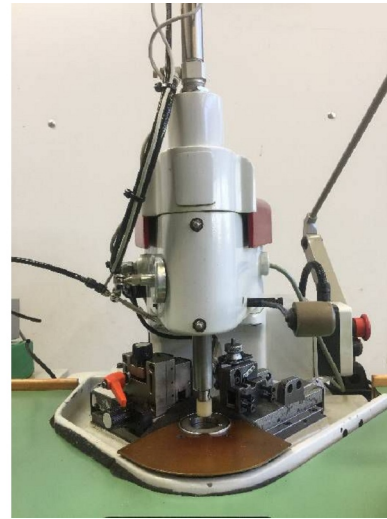


HD pictures and videos on request.

All data such as technical specifications, weight, dimensions, illustrations are indicative and subject to change without notice.

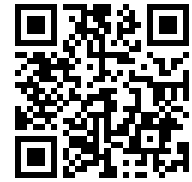


Inventory N° 13036

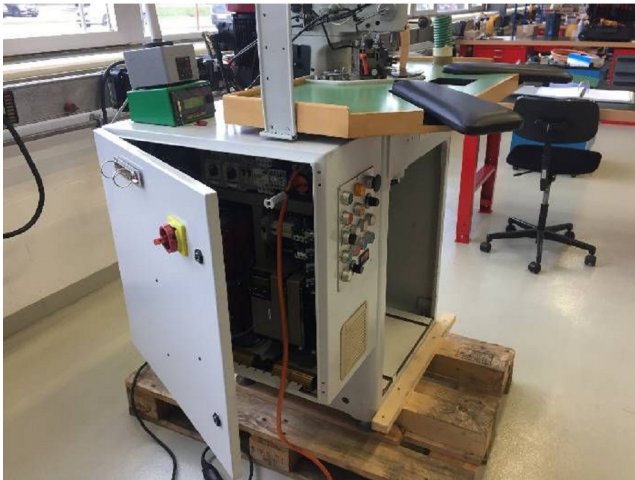


HD pictures and videos on request.

All data such as technical specifications, weight, dimensions, illustrations are indicative and subject to change without notice.



Inventory N° **13036**



HD pictures and videos on request.

All data such as technical specifications, weight, dimensions, illustrations are indicative and subject to change without notice.