

Machine

Inventory N°	12012
Description	Milling machine
Brand	SCHAUBLIN
Model	53N
Serial No	267 597
Year	1975



Heading

Number of axis total

Longitudinal traverse (x-axis) 700 mm

Cross traverse (y-axis) 250 mm

Vertical travel (z axis) 490 mm

Table length 1100 mm

Table width 305 mm

Taper size 40 ISO

Spindle speed 38-1510 t/min

Overall dimensions: l x w x h 1553x1925x1720 mm

Weight 2200 Kg

Accessories

Display of values of measurements 1

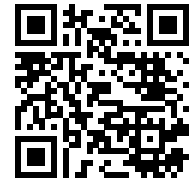
Tool cabinet 1

Pictures

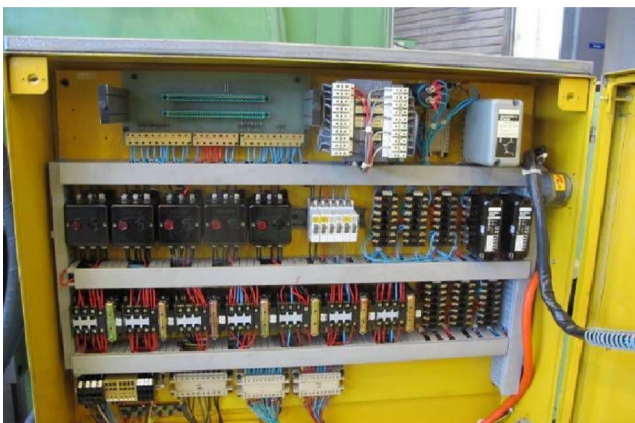


HD pictures and videos on request.

All data such as technical specifications, weight, dimensions, illustrations are indicative and subject to change without notice.

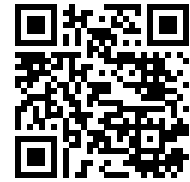


Inventory N° 12012

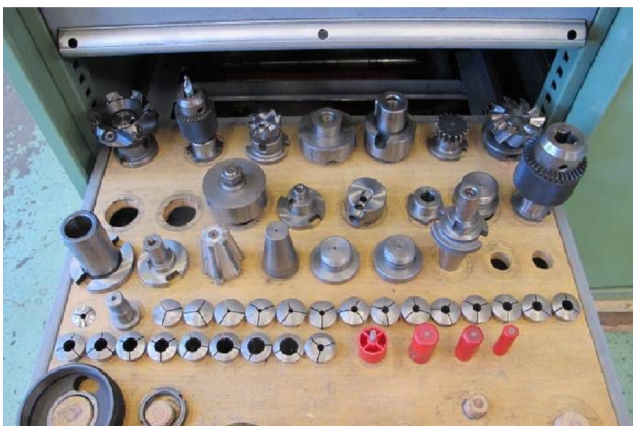
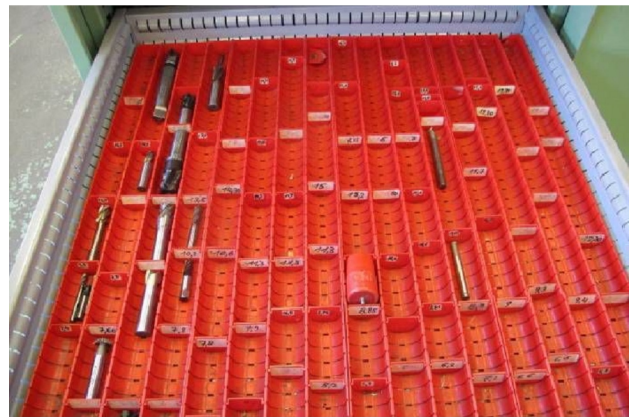


HD pictures and videos on request.

All data such as technical specifications, weight, dimensions, illustrations are indicative and subject to change without notice.

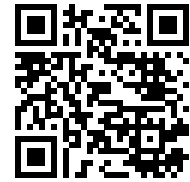


Inventory N° 12012

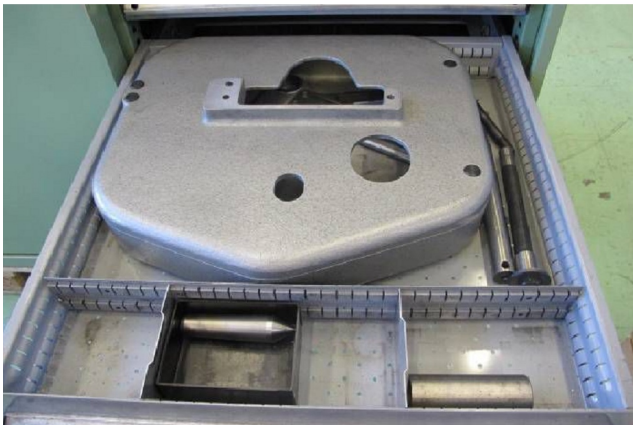
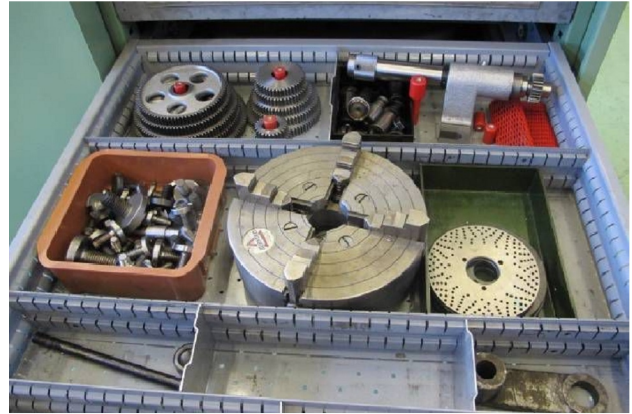


HD pictures and videos on request.

All data such as technical specifications, weight, dimensions, illustrations are indicative and subject to change without notice.



Inventory N° 12012



HD pictures and videos on request.

All data such as technical specifications, weight, dimensions, illustrations are indicative and subject to change without notice.

