

Machine

Inventory N°	5362
Description	Press
State	Neuve
Brand	GREUB
Model	G3
Serial No	0001
Year	2014



Heading

Control	FANUC
Pressure	3 to
Up to	x
Adjustment of the slide	25
Cycle	100 c/min
Adjustment of the slide	15
Cycle	150 c/min
Adjustment of the slide	6
Cycle	300 c/min
	83-167 mm
Z axis	
Motor power	1,5/4 kW
Spindle lead	10 mm
Total stroke	84 mm
Over-all dimensions	2350x980x1735 mm
Weight	760 Kg
Voltage	400 Volts
Gripper feed	
Power drawn by the machine	7,5 kVA

Accessories

Lower extractor

Workpiece collector

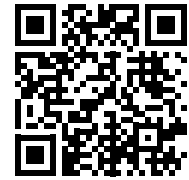
Gripper feed

Stock reels

Rolls

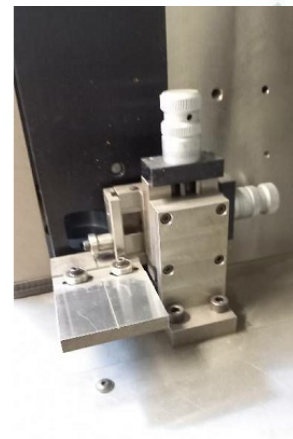
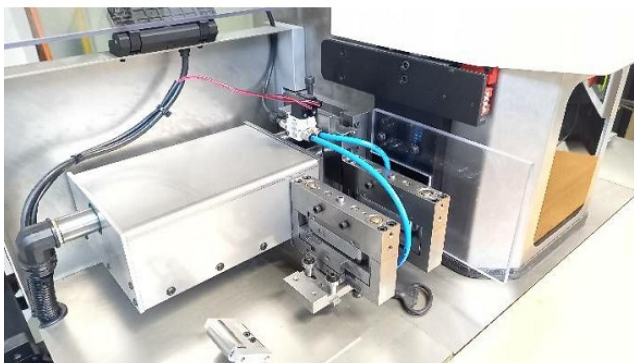
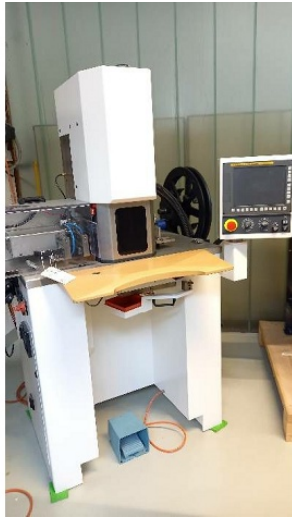
HD pictures and videos on request.

All data such as technical specifications, weight, dimensions, illustrations are indicative and subject to change without notice.

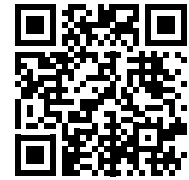


Inventory N° 5362

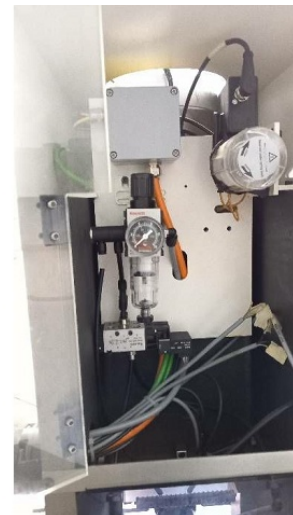
Pictures



HD pictures and videos on request.
All data such as technical specifications, weight, dimensions, illustrations are indicative and subject to change without notice.



Inventory N° **5362**



HD pictures and videos on request.

All data such as technical specifications, weight, dimensions, illustrations are indicative and subject to change without notice.