

Machine

Inventory N° **16208**
Description **Machining center**

Brand **WILLEMIN MACODEL**
Model **W408 B**
Serial No **143**
Year **2002**



Heading

Cnc control **NUM 1050**

Spindle

Number of spindles **1**
Speed **30'000 t/min**
Power **10 kW**
Longitudinal traverse (x-axis) **250 mm**
Cross traverse (y-axis) **200 mm**
Vertical travel (z axis) **300 mm**

B-axis

Total stroke **-15/+100 °**
Precision **0.001 °**

Tool changer:

Capacity (work piece): **24**

Tool **HSK E40**

Voltage **400 V**

Over-all dimensions

Over-all-dimension (length-width-height) **1800x2200x2200 mm**
Machine's weight **1700 Kg**
Number hours (under power) **72302 h**

Accessories

Oil mist extractor **1**

Refroidisseur Marksa **1**

Barloader **1**

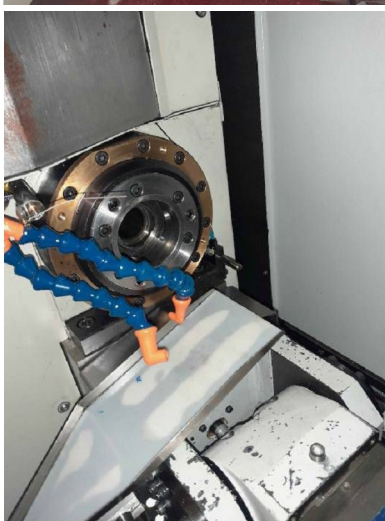
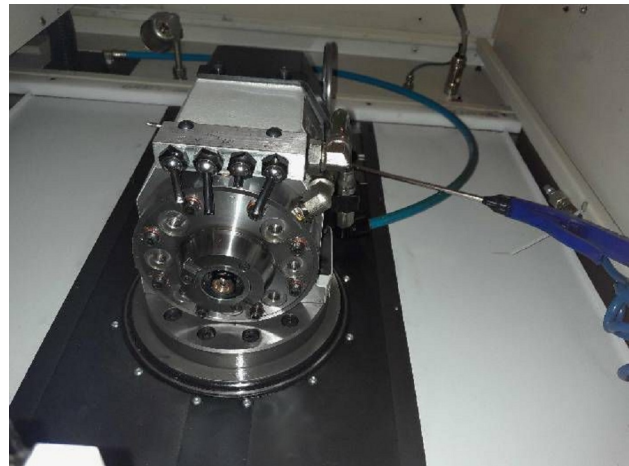
HD pictures and videos on request.

All data such as technical specifications, weight, dimensions, illustrations are indicative and subject to change without notice.



Inventory N° 16208

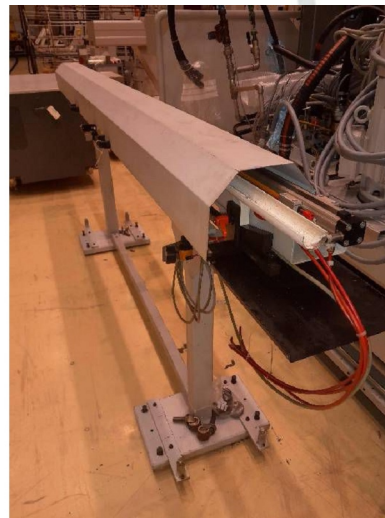
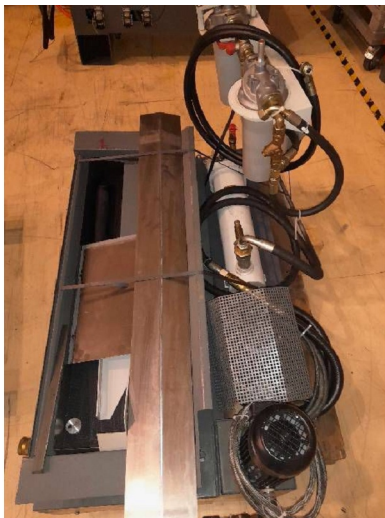
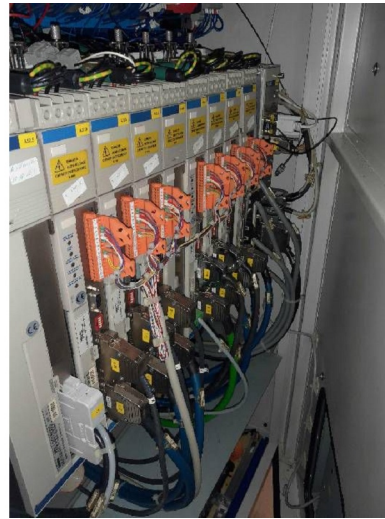
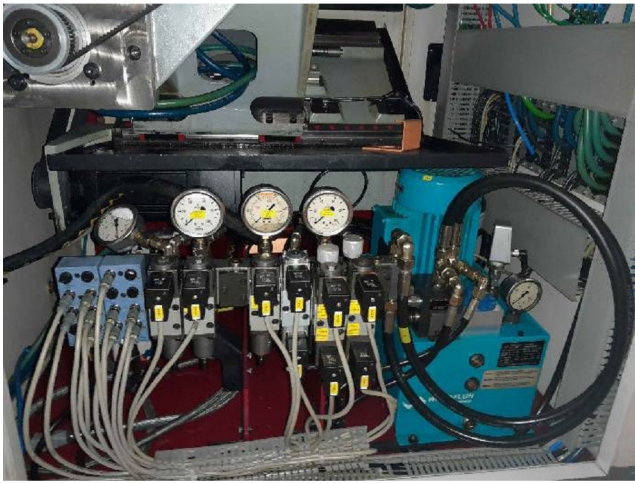
Pictures



HD pictures and videos on request.
All data such as technical specifications, weight, dimensions, illustrations are indicative and subject to change without notice.



Inventory N° 16208



HD pictures and videos on request.
All data such as technical specifications, weight, dimensions, illustrations are indicative and subject to change without notice.



Inventory N° **16208**



HD pictures and videos on request.
All data such as technical specifications, weight, dimensions, illustrations are indicative and subject to change without notice.