

Machine

Inventory N° **15625**
Description **Machining center**

Brand **WILLEMEN MACODEL**
Model **W408 MTV**
Serial No **219**
Year **2007**



Heading

Number of axis simultaneous

Nc-control	FAST
Longitudinal traverse (x-axis)	250 mm
Cross traverse (y-axis)	200 mm
Vertical travel (z axis)	300 mm

Resolution

Spindle speed	30000 t/min
Arbors	
Spindle motor	kW
Tool magasin	x
Weight	1700 kg
Over-all-dimension (lenght-width-height)	mm
Number hours	h
Coolant unit	Marksa
Oil mist extractor	

Accessories

None

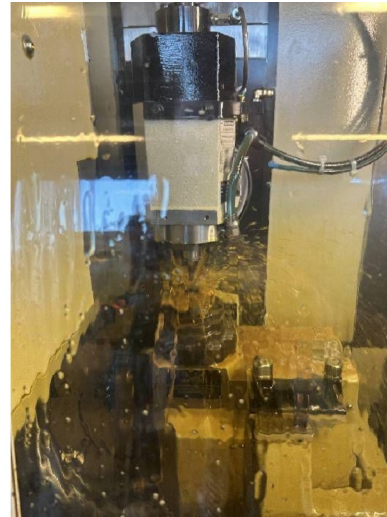
HD pictures and videos on request.

All data such as technical specifications, weight, dimensions, illustrations are indicative and subject to change without notice.



Inventory N° 15625

Pictures

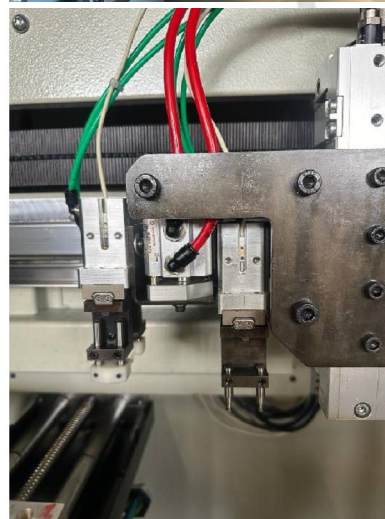
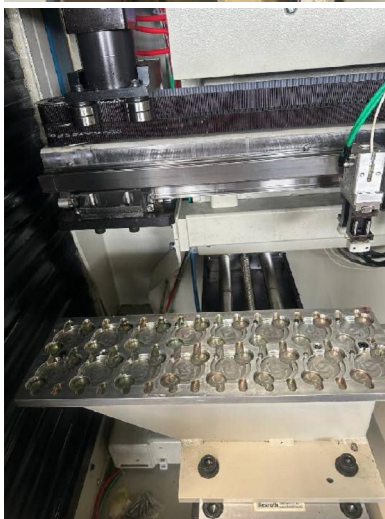
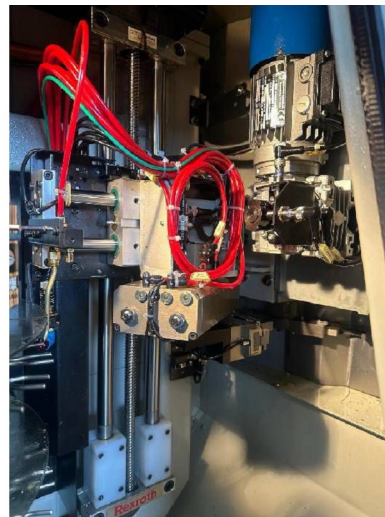


HD pictures and videos on request.

All data such as technical specifications, weight, dimensions, illustrations are indicative and subject to change without notice.

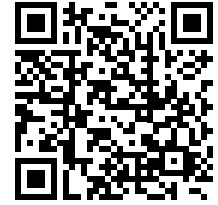


Inventory N° 15625

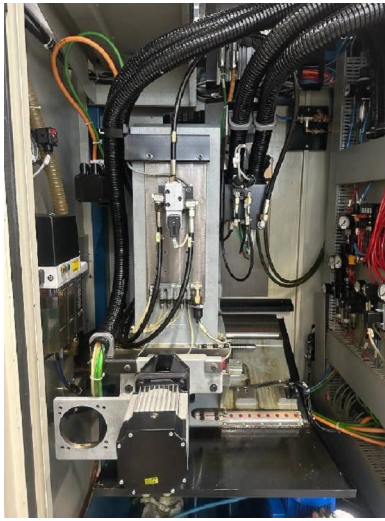


HD pictures and videos on request.

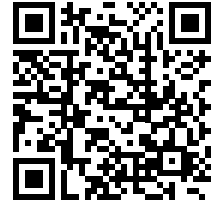
All data such as technical specifications, weight, dimensions, illustrations are indicative and subject to change without notice.



Inventory N° 15625



HD pictures and videos on request.
All data such as technical specifications, weight, dimensions, illustrations are indicative and subject to change without notice.

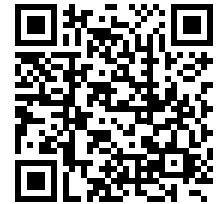


Inventory N° 15625

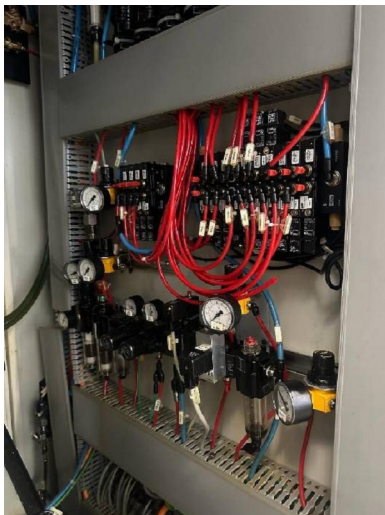


HD pictures and videos on request.

All data such as technical specifications, weight, dimensions, illustrations are indicative and subject to change without notice.



Inventory N° **15625**



HD pictures and videos on request.

All data such as technical specifications, weight, dimensions, illustrations are indicative and subject to change without notice.