



## Machine

Inventory N°	<b>14584</b>
Description	Emery grinding machine
Brand	<b>BRUSA &amp; GARBOLI</b>
Model	<b>DUO</b>
Serial No	<b>A37144</b>
Year	<b>2015</b>



## Heading

Min. thickness	1 mm
Max. thickness	100 mm
Min. work piece length	180 mm
Width max	150 mm
Range of weight	20 Kg
Stroke speed	1-10 m/min
Installed power	3.5 kW

## Over-all dimensions

Over-all-dimension (length-width-height)	900x980x1880 mm
Weight	430 Kg

## Accessories

None

## Pictures

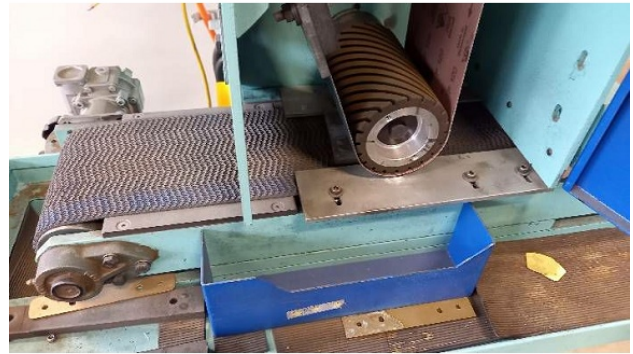


HD pictures and videos on request.

All data such as technical specifications, weight, dimensions, illustrations are indicative and subject to change without notice.

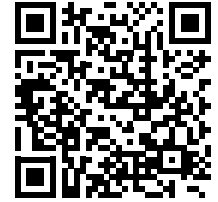


Inventory N° 14584

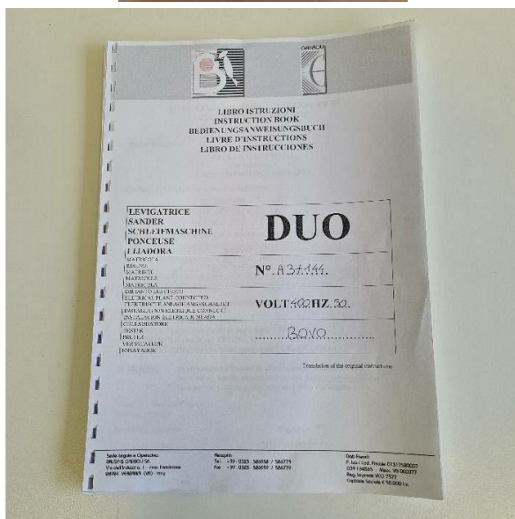
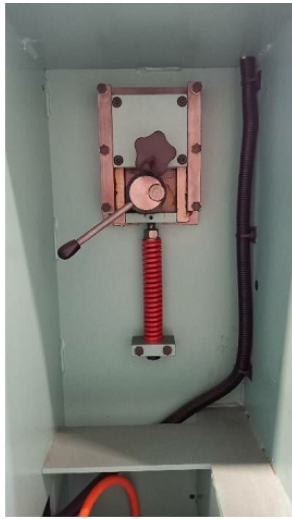


HD pictures and videos on request.

All data such as technical specifications, weight, dimensions, illustrations are indicative and subject to change without notice.



Inventory N° **14584**



HD pictures and videos on request.

All data such as technical specifications, weight, dimensions, illustrations are indicative and subject to change without notice.